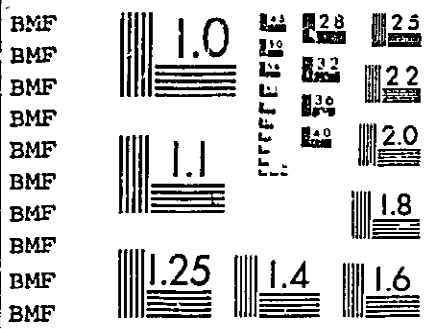


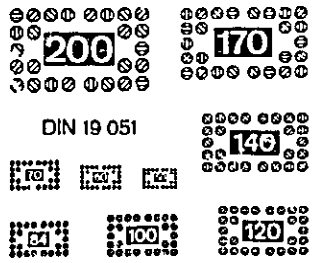
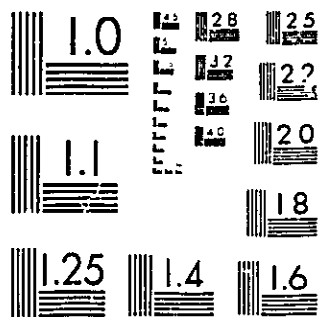
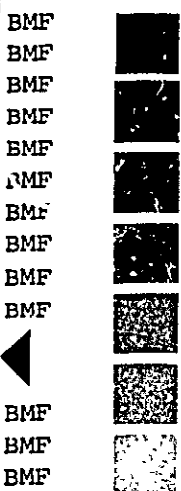
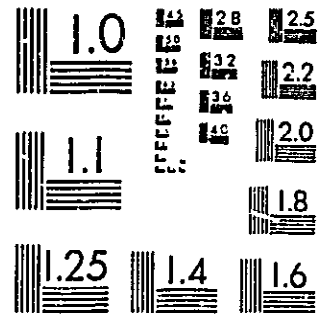
BMF BMF BMF BMF BMF
 BMF BMF BMF BMF BMF
 Testblatt
 Feuille de vérification
 Foglio di prova
 1

Büfa  Mikrofilm Fachgruppe

5 10

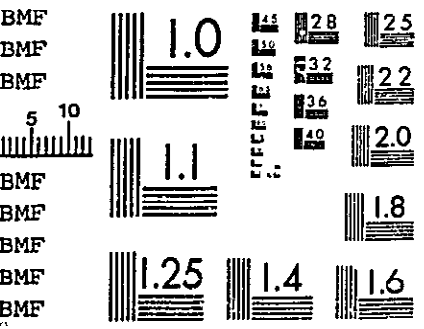


10 5

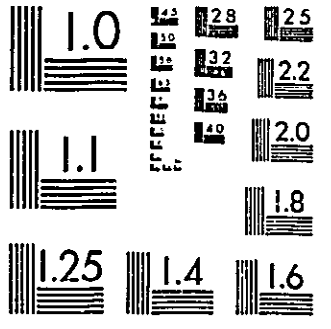


DIN 19 051

100 mm



5 10



10 5

Masch. _____
 No. _____
 Zahler _____

 Dat. _____ Sig. _____

BMF BMF BMF BMF
 BMF BMF BMF BMF

5 10



BMF BMF

10 5

BMF BMF BMF BMF
 BMF BMF BMF BMF

LIST OF CONTENTS FICHE IV

	Fiche
VESSEL GLASS by JEREMY HASLAM.	A3
STONE OBJECTS (FIGS.168-85) by GEOFF EGAN (NOS.1-61), MARTIN HENIG (NOS.62-63) AND GWYNNE OAKLEY (NOS.64-82); PETROLOGICAL IDENTIFICATION by H.P. POWELL.	B1
PAINTED WINDOW GLASS (FIGS.186-202) by JILL KERR.	D1
DAUB by JULIAN MUNBY.	EB
PAINTED WALL PLASTER by JULIAN MUNBY.	F1
TILES FROM GREYFRIARS by MAUREEN MELLOR.	F8

Photocopies of the microfiche can be obtained from the Oxford
Archaeologica? Unit, 46 Hythe Bridge Street, Oxford, OX1 2EP.

VESSEL GLASS by JEREMY HASLAM

Site A: 1-17; Site B: 18-20; Site D: 21-26; Site SEL: 27; Site W: 28-30

Site A, 31-34 Church St.

1. Small fragment of kick-up of base of flask, with pontil mark; completely weathered glass. Medieval.
A SF3115a, L2 (2M, 110/998), unstratified.
2. Small fragments of unidentified vessel; pale, blue glass with slightly mauve tinge. 2mm. thick.
A SF1132, F1022, 15th-cent. context.
3. Fragment of the base of a thick-walled vessel (probably a flask), with an irregular trail of similar glass applied to the exterior; glass completely weathered, but probably originally pale green.
A SF1175, F1540 L1, 13th-cent. context.
4. Rim of flask, probably a urinal; pale green glass, weathered on surface.
75.25.233 A SF2252, F2502 L1, 14th-cent. context.
5. Fragment of the neck of a vessel (possibly a flask) with a pronounced infolded rim; glass very weathered, but probably originally pale green.
75.25.234 A SF2090, F2503 L1, early 12th-cent. context.
6. Crushed fragments of a thin-walled, wide-rimmed vessel; probably originally pale green glass (not illustrated). Includes fragments of the rim (diameter \approx 12cm.), and part of the base.
Possibly part of an alembic.
A SF2088, F2510 L3, 14th-cent. context.

VESSEL GLASS

7. Glass fragment (not illustrated).
A SF3006, F2540, 13th-cent. context.
- 8-10. Fragments of thickened bases of urinals with pontil marks on the exterior; pale green glass showing various degrees of weathering. No.10 is not illustrated.
8. 75.25.235 A SF118, F77 L43, 13th-cent. context;
9. 75.25.236 A SF1048, F1021 L1076, 14th-cent. context;
10. A SF1159, F1516 L1, 13th-cent. context.
11. Urinal rim, diameter c.7 cm. (possibly oval); pale green glass, badly weathered.
A SF-- , F79 L98 & L165, 15th-cent. context.
12. Single fragment of the lip of a urinal; pale green glass, very weathered.
A SF1140, F1007 L1055, 13th-cent. context.
13. Base of urinal; pale green glass with surface weathering.
A SF3118, F1516 L1, 13th-cent. context.
14. Fragment of a linen smoother; badly weathered glass.
A SF580, F116, 13th-cent. context.
15. Fragment of a linen smoother; very weathered but probably dark green glass. Diameter c.10-12 cm.
A SF1152, F1024 L1245, 13th-cent. context.
16. Fragment of a linen smoother, or possibly a lump of raw glass from a furnace (though its domestic context favours the former identification); very dark green or black glass with a surface layer of devitrified glass 3 mm. in thickness. Approximate dimensions: 4 x 2.5 x 2.0 cm. Not illustrated.
A SF2223, F2534, 11th-cent. context.
17. Fragment of a linen smoother; very weathered. Diameter c.7 cm.
A SF2117, F2541, 13th-cent. context.

VESSEL GLASS

Site B, Greyfriars

18. Base of a hanging lamp; completely weathered but probably originally pale green glass.
B IV SF49, L24, undated context.
19. Fragment of a finger-ring [1], diameter 2 cm. Not illustrated.
B X SF13, F33, undated context (burial).
20. Glass fragment. Medieval. Not illustrated.
B XXXIII SF21, L1, unstratified.

-
1. cf. D.M. Waterman, 'Late Saxon, Viking and Early Medieval Finds from York', Archaeologia, xcviij (1959), 103f., Fig.25, No.9.

VESSEL GLASS

Site D, Littlegate

21. Fragment of a kicked-up base of a large flask; pale green glass, much weathered. Medieval.
D I SF15, L3, unstratified.
22. Base of urinal, or possibly distilling/alchemical apparatus; pale green glass, much weathered. Contains a black resinous substance, possibly evidence for the use of the flask in alchemical work. Medieval.
D I SF15, L3, unstratified.
23. Fragment of either the neck or the base of a bottle or flask; completely devitrified, but probably originally green glass. Medieval.
D I SF33, L3, unstratified.
24. Fragment of a urinal, with puntil mark on convex side; opaque glass, badly weathered, but probably originally pale green. Medieval.
D I SF36, F34, mid 17th-cent. context.
25. Small fragments of thin glass of unidentifiable vessel; completely devitrified. Probably medieval. Not illustrated.
D II SF31, L3, unstratified.
26. Fragments of rim of a flask, possibly a urinal; pale green glass, much weathered.
D IV SF72, F115, 15th-cent. context.

VESSEL GLASS

Site SEL, Selfridges

27. Top of a urinal flask. Pale green glass.
SEL SF - -, F97, undated context.
28. An unusual ribbed flask with vertical mould-blown ribbing. Pale green glass.
SEL SF - -, 197, undated context.

Site W, Westgate

29. Fragment of the base of a urinal, as No.8. 13th to 14th century.
W SF39, F5, Barbican Ditch. [1]
30. Small fragments of a rim of a flask or bottle, with a wide neck and flanged rim; blue glass, very weathered. Associated with No.31.
W SF - -, F89, 13th- to 14th-cent. context.
31. Part of the lip and neck, with the upper part of the handle, of a tall-necked jug; pale green glass, very weathered. Fragments of the neck show faint spiral mould-blown ribbing. Associated with No.30.
W SF - -, F89, 13th- to 14th-cent. context.

1. Published in T.G. Hassall, 'Excavations at Oxford Castle, 1965-1973', Oxoniensia, xli (1976), 244.

M IV AB

M IV A9

M. IV A10

M IV A11

M IV A12

M IV A13

M IV A14

STONE OBJECTS

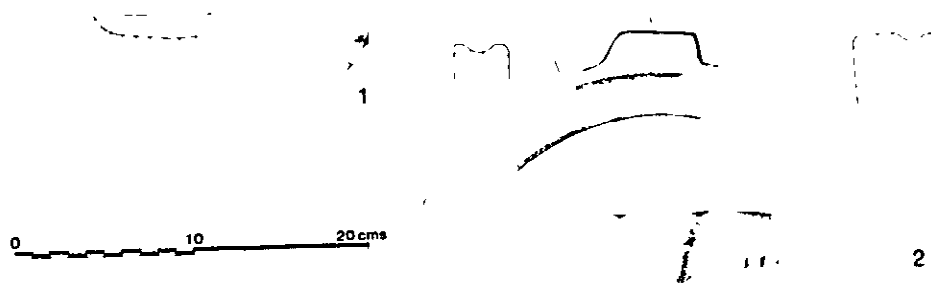


Fig. 168

M IV B1

STONE OBJECTS by GEOFF EGAN (NOS.1-61),
MARTIN HENIG (NOS.62-63) and GWYNNE OAKLEY (NOS.64-82);
PETROLOGICAL IDENTIFICATION by H.P. POWELL

Figs.168-185

Site A: 1-61; Site B: 62-63; Site D: 64-69; Site SEL: 70-77;
Site W: 78-82.

Site A, Church St. by Geoff Egan

This report was prepared in 1978 and does not take account of subsequent research.

1-2 Mortars:

1. Possible mortar base fragment with the base of a lug. The tight curve where the side meets the base may discount this interpretation (but cf. Dunning [1] No.45), and the fragment may be part of a large lamp. Blackening (from burning?) is present only on the smooth interior surface and suggests that the latter identification may be correct. Headington stone?

75.25.171 A SF1093, L2 (2M, 106/1004), unstratified.

2. Rim fragment from a mortar with a rectangular lug and a hollowed top. There are fine chiselling marks on the internal and external surfaces, and some coarser ones on the lower part of the external surface. Purbeck marble. Similar mortars have been found in King's Lynn and a full discussion of mortars is included with the descriptions. [2]

75.25.172 A SF91, F1 L102, construction trench for a well containing mid to late 17th-century material.

-
1. G.C. Dunning in H. Clarke and A. Carter, Excavations in King's Lynn, 1963-1970, Society for Medieval Archaeology Monograph No.7 (1977), 342.
 2. Ibid., 320-47; 326, No.30.

STONE OBJECTS

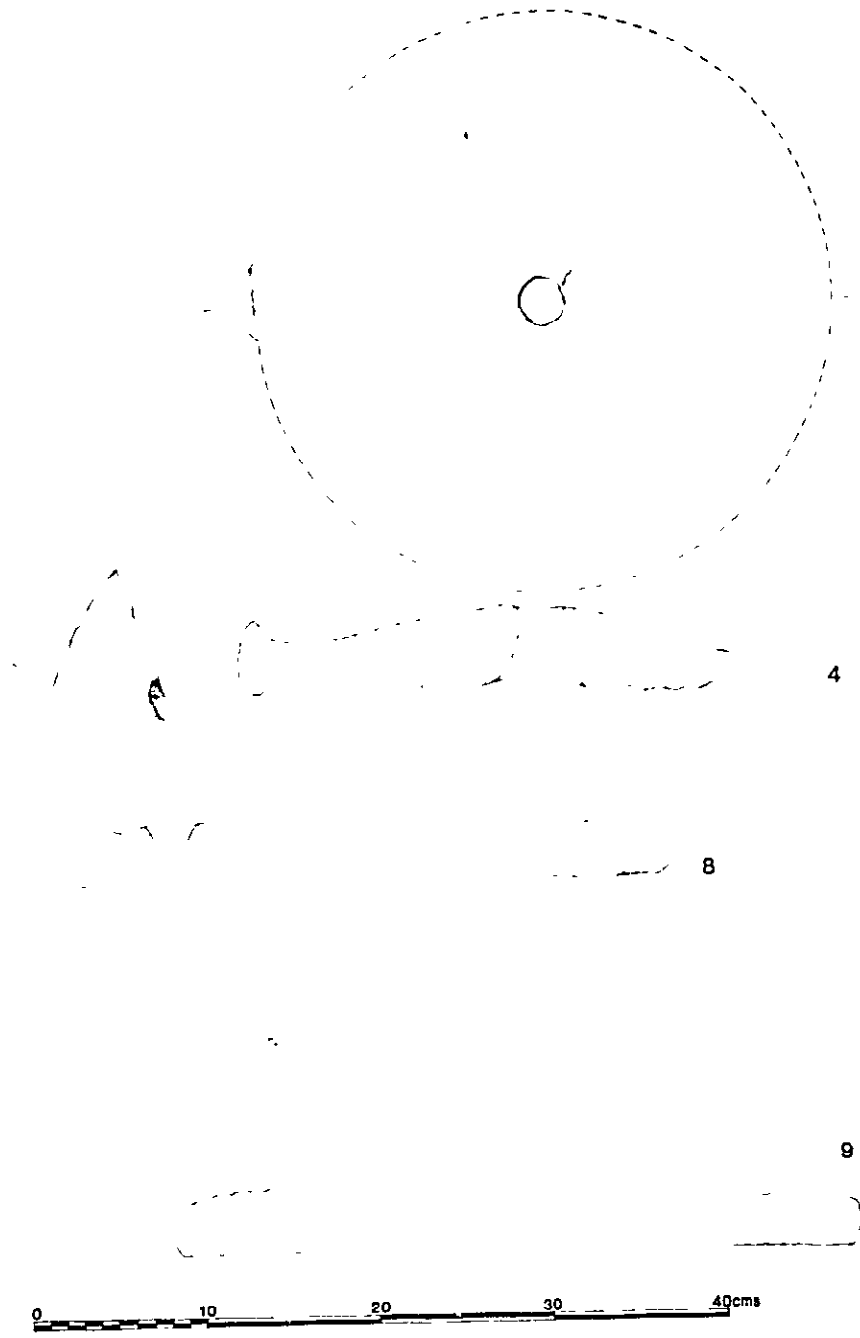


Fig.169

M IV B3

STONE OBJECTS

3-11. Millstone or Quernstone Fragments:

All are of lava, similar to that from the Niedermendig area in Germany.

3. Fragment. Not illustrated.

A SF3328, unstratified.

4. Part of a lower stone with a raised edge and worn convex surface.

75.25.173 A SF165, L1, unstratified.

5. Fragment. Not illustrated.

A SF195, F59 L179, 14th-cent. context.

6. Edge? Not illustrated.

A SF3329, F519 L2, 10th-cent. (or earlier) context.

7. No comment. Not illustrated.

A SF3049, F1030 L1249, 15th-cent. context.

8. Edge fragment of an upper quernstone, with a worn handle hole and a worn lower surface. A larger fragment of a quernstone of the same type (though of a different stone and from a Roman context) was found at Thorplands, Northamptonshire. [1]

A SF1164A, F1538, 12th-cent. context.

9. Two fragments which join. Worn surface.

A SF1164B, F1538, 12th-cent. context.

A SF3327, F2520 L1, 12th-cent. context.

10. Two fragments which join. Unworn flat surface. Not illustrated.

A SF1194, F1538, 12th-cent. context.

A SF1164C, F1538, 12th-cent. context.

11. Fragment. Not illustrated.

A SF2132, F2522 L1, 13th-cent. context.

1. R. Hunter and D. Mynard, 'Excavations at Thorplands', Northamptonshire Archaeology, xii (1977), 142-43; Fig.21, No.334.

STONE OBJECTS

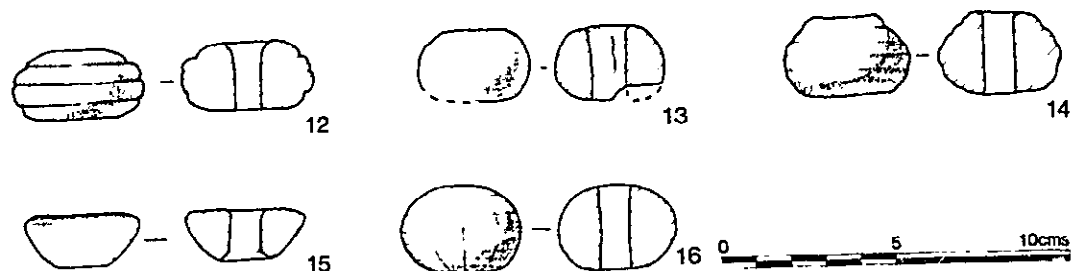


Fig.170

- 12-18. Spindle whorls:
 Fragmentary, unless otherwise stated. Weight only given for the complete example (No.18).
12. Turned, with grooves and a flat top. Stone from the Lower Chalk.
 75.25.174 A SF221, L2 (2M, 106/1008), unstratified.
13. Almost complete. Biconvex. Synthetic material, i.e. Mud.
 75.25.175 A SF102, L2 (2M, 118/998), unstratified.
14. Turned, with grooves and a flat top. Stone from the Lower Chalk.
 75.25.176 A SF556, L350, undated context.
15. Turned, with grooves and a flat top. Stone from the Lower Chalk.
 75.25.177 A SF1045, F1024 L1099, 13th-cent. context.
16. Fragment with incised linear decoration. Biconvex. Clay.
 75.25.178 A SF1057, F1051 L1229, 13th-cent. context.

STONE OBJECTS

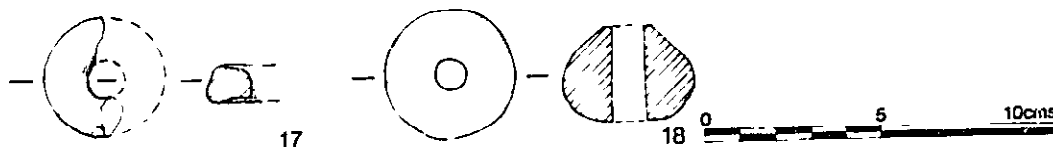


Fig.171

17. Fragment. Apparently made from the base of a pot, perhaps a Roman beaker. It had been fired at a temperature higher than that for originally firing the pot and has a clinker-like appearance. Included under this section since it has been treated like a piece of stone.

75.25.179 A SF3007, F1509 L4, 13th-cent. context.

18. Complete. Turned. Biconvex. Weight 46.3gm, which is considerably heavier than the stone spindle whorls found in King's Lynn [1] and may indicate use with a thick thread. Stone from the Lower Chalk.

75.25.180 A SF1174, F1540 L1, 13th-cent. context.

-
1. H. Clarke and A. Carter, Excavations in King's Lynn, 1963-1970, Society for Medieval Archaeology Monograph No.7 (1977), 315-17.

STONE OBJECTS

19-49. Hones:

For a discussion of the provenance of medieval hones see S.E. Ellis. [1] All are fragmentary. The grooves are interpreted as being the result of sharpening needles. [2] All perforations are bored from each side to meet centrally and are presumably for suspension. Nos. 19-38 are all made of a precisely similar mica-schist from Scotland, possibly Anglesey or abroad. Schist for hones was exported from Norway from the early medieval period and a wreck with a cargo of schist has been found in the harbour of the trading centre at Kaupang. [3]

1. S.E. Ellis, 'The Petrography and Provenance of Anglo-Saxon and Medieval English Honestones, with Notes on some other Stones', Bulletin of the British Museum (Natural History) Mineralogy, ii, No.3 (1969), 135-87.
2. H. Clarke and A. Carter, Excavations in King's Lynn, 1963-1970, Society for Medieval Archaeology Monograph No.7 (1977), 317-19.
3. H. Jankuhn, 'New Beginnings in Northern Europe and Scandinavia', in M.W. Barley (ed.), European Towns, their Archaeology and Early History, (1977), 368.

STONE OBJECTS

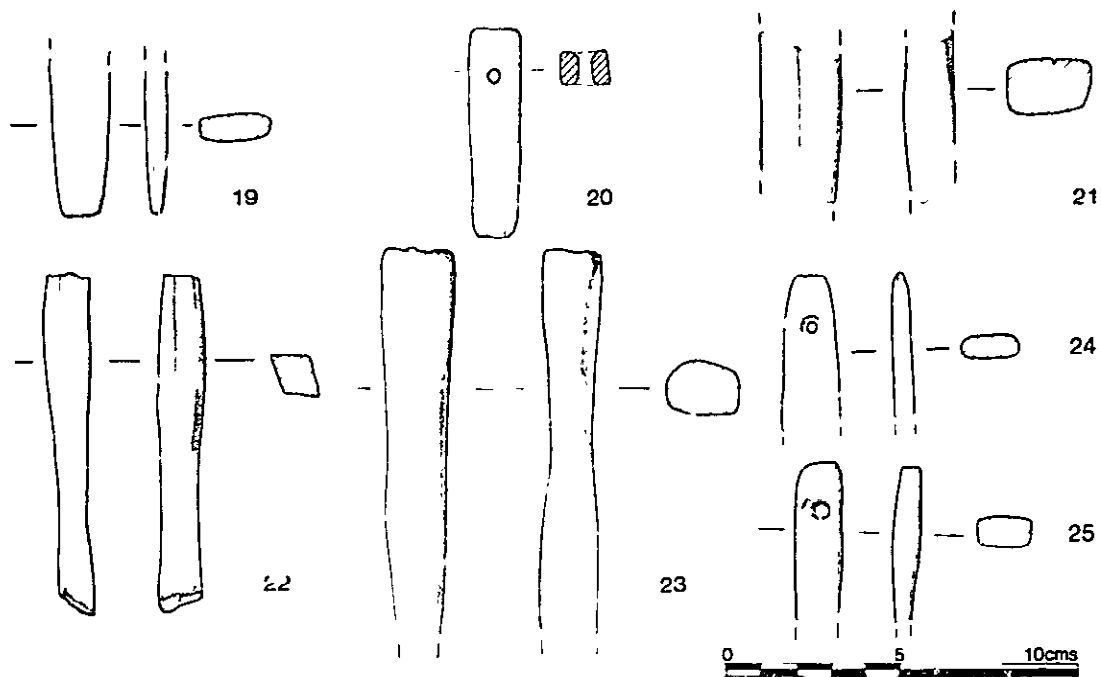


Fig.172

19. Fragment with a flat end.
 75.25.188 A SF1a, Trial Trench L14, undated context.
 20. Fragment with a perforation and a flat end.
 75.25.189 A SF2061, L1, unstratified.
 21. Fragment with a narrow groove.
 75.25.190 A SF190, L2 (2M, 114/1004), unstratified.
 22. Fragment with a narrow groove.
 75.25.191 A SF1104, L2 (2M, 106/1008), unstratified.
 23. No comment.
 75.25.192 A SF1136, L2 (2M, 108/994), unstratified.
 24. Fragment with a perforation and a flat end.
 75.25.193 A SF510, F59 L179, 14th-cent. context.
 25. Fragment with a perforation and a damaged flat end.
 75.25.194 A SF532, F122 L228, 14th-cent. context.

STONE OBJECTS

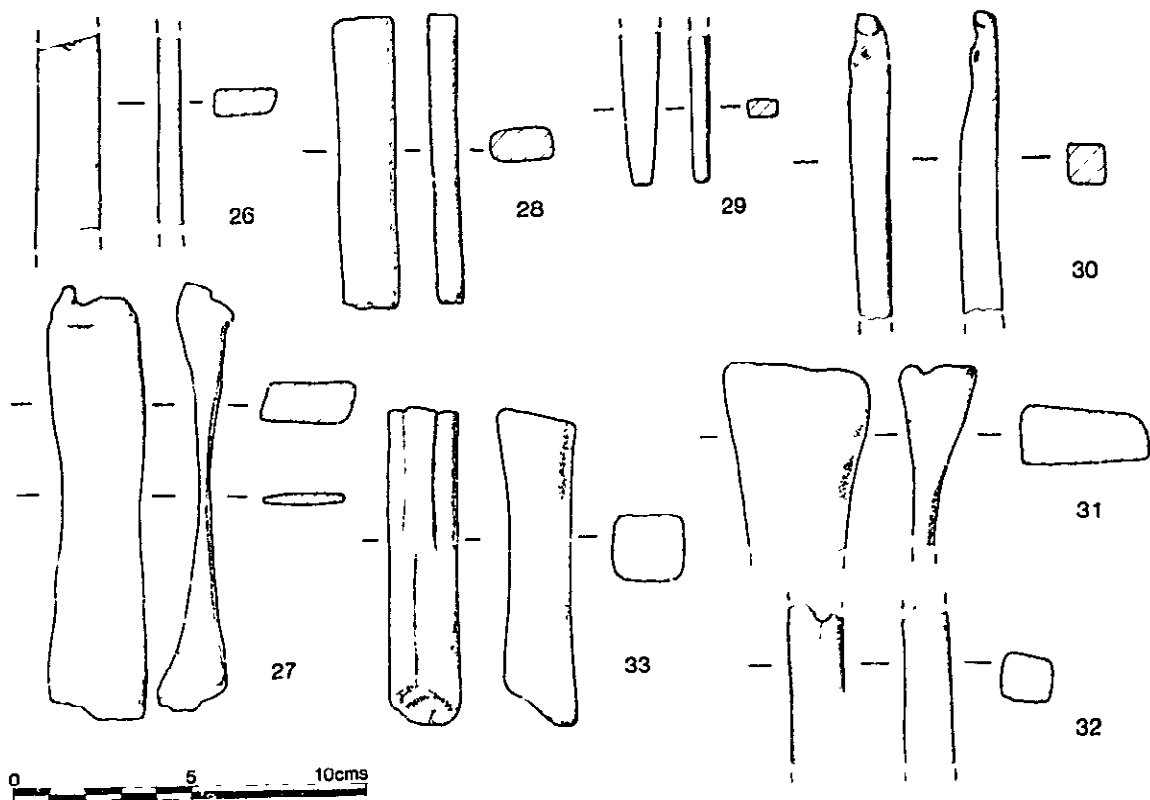


Fig.173

26. Fragment with a damaged perforation.
75.25.195 A SF544, F116 L204b, 13th-cent. context.
27. A well-worn hone in two pieces; perhaps discarded when the break occurred.
75.25.196 A SF562, F116, 13th-cent. context.
28. No comment.
75.25.197 A SF537A, F121 L235, 14th-cent. context.
29. Fragment with flat end.
75.25.198 A SF537B, F121 L235, 14th-cent. context.
30. Fragment with a perforation and a rounded end.
75.25.199 A SF545A, F130 L268, 11th-cent. context.
31. Fragment with one end of a broad groove.
75.25.200 A SF575, F139 L289, 13th-cent. context.
32. Fragment with a narrow groove.
75.25.201 A SF549, F140 L291, 13th-cent. context.
33. Fragment. One surface with two narrow grooves.
75.25.202 A SF1049, F1014 L1090, 15th-cent. context.

STONE OBJECTS

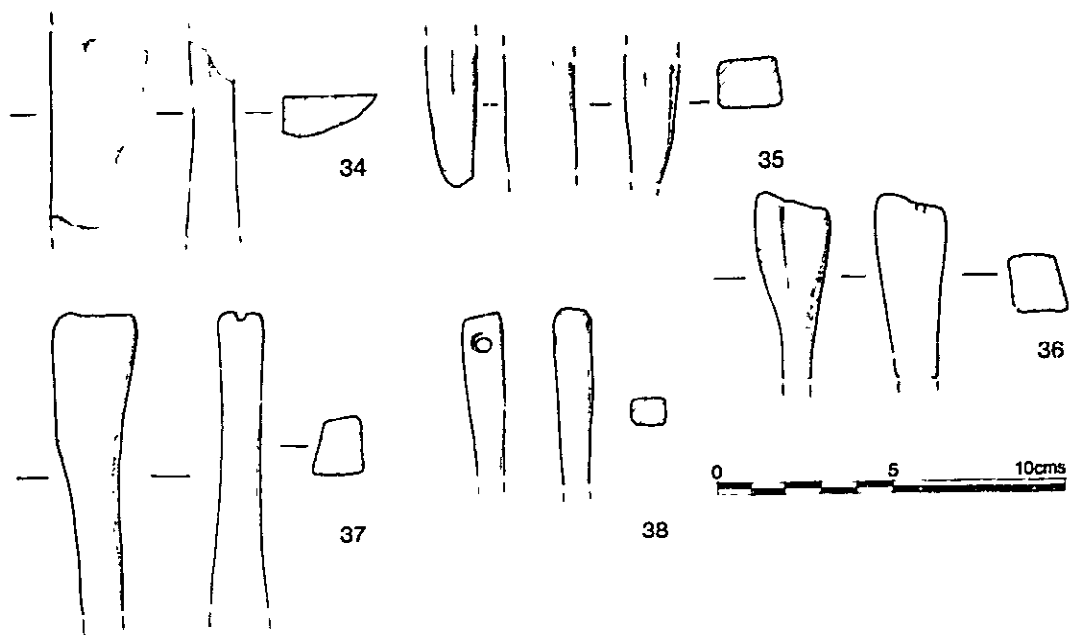


Fig.174

34. Chip from a large hone.
 75.25.203 A SF3029, F1057 L2, 15th-cent. context.
35. Fragment with a narrow groove.
 75.25.204 A SF3046, F1509 L3, 13th-cent. context.
36. Fragment with one narrow groove on one surface; two at the broken end of another and several at right angles to the grain of the stone on a third.
37. Fragment.
 75.25.206 A SF2071, L2013, undated context.
38. Fragment with a perforation and a flat end.
 75.25.207 A SF2093, F2503 L1, 12th-cent. context.

STONE OBJECTS

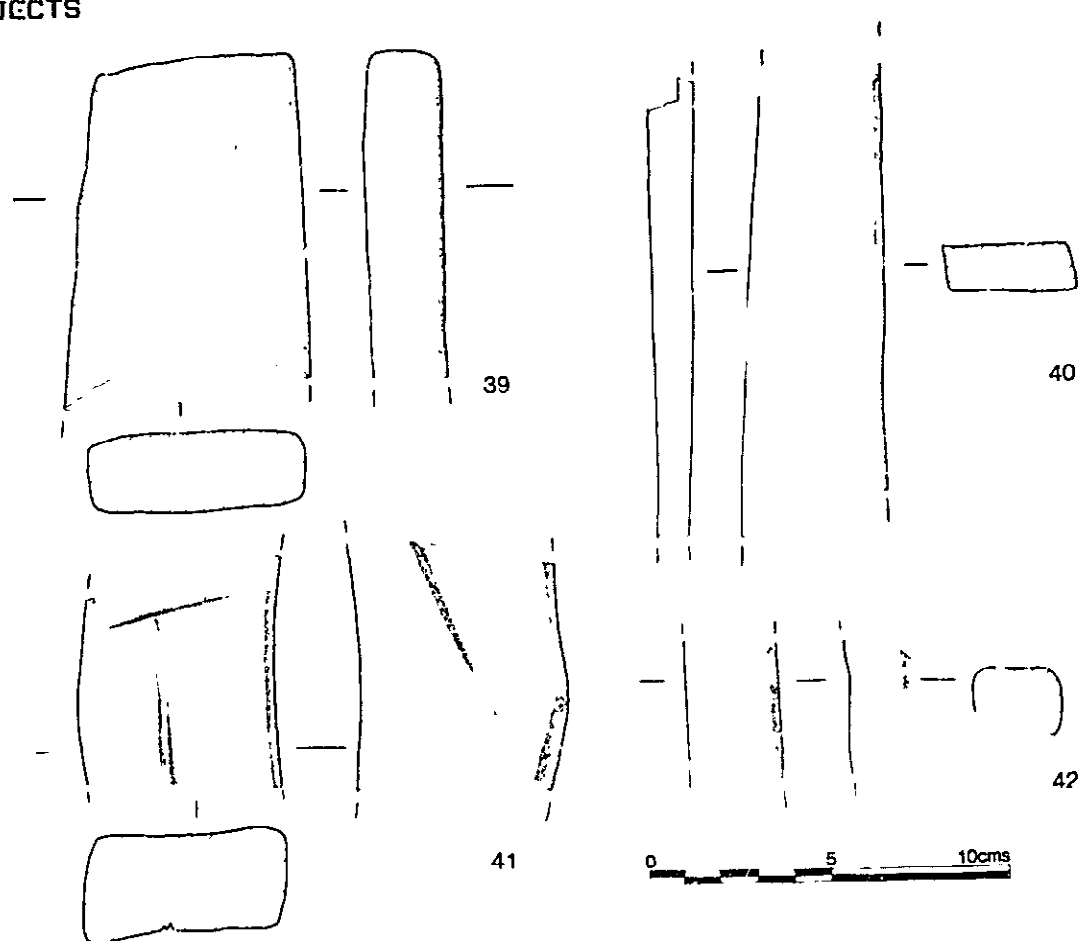


Fig.175

39-42. Hones made of medium-grained micaceous sandstone:

39. Fragment.

75.25.208 A SF600, F501, 13th-cent. context.

40. Stone from the Forest of Dean, Mercia, Wales etc.

75.25.209 A SF1044, F1006 L1100, 15th-cent. context.

41. Fragment with narrow grooves on two surfaces, including some at an angle to the grain of the stone. Slightly finer grain than No.47. The stone could be from the Forest of Dean, Mercia, Wales etc.

75.25.210 A SF1052, F1014 L1090, 15th-cent. context.

42. Fragment, partially fire-blackened. Stone with a compact grain, not local.

75.25.211 A SF3036, F1022, 15th-cent. context.

STONE OBJECTS

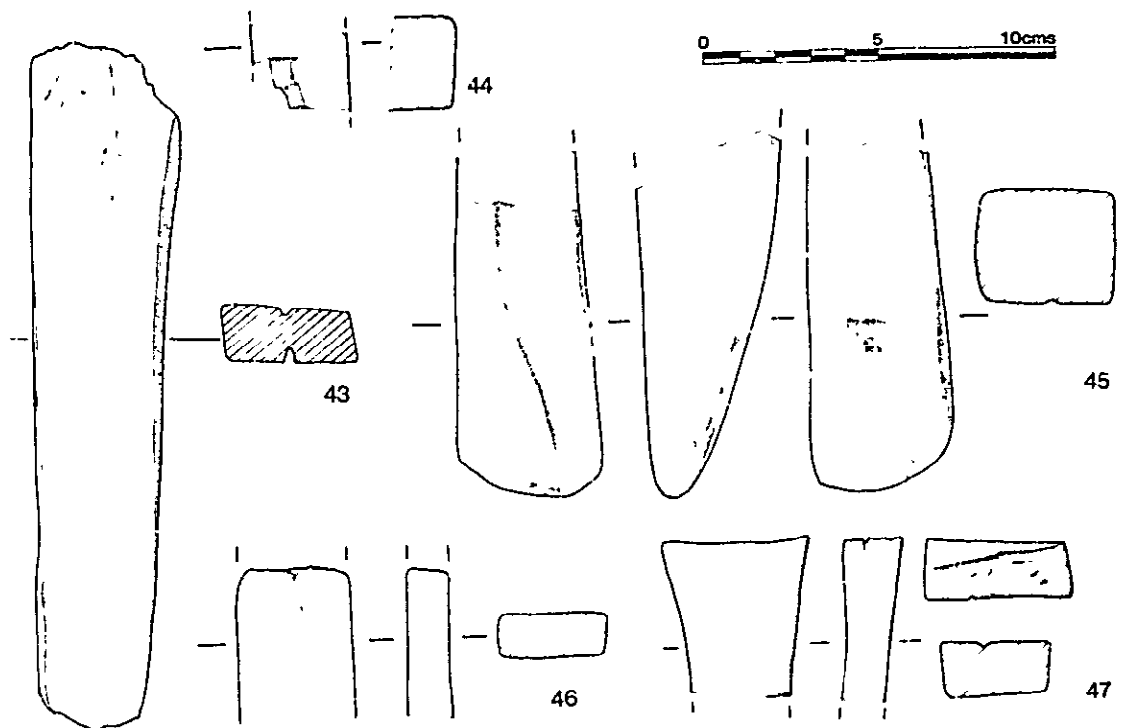


Fig.176

- 43-44. Hones made of dark grey, fine-grained, slightly micaceous sandstone; Not of local origin, unless from the Drift.
43. Fragment with narrow grooves on two surfaces. Very compact stone.
75.25.212 A SF1027, F1016 L1087, 13th-cent. context.
44. Fragment with very smooth surfaces. Very compact, very fine-grained stone.
75.25.213 A SF2130, F2519, 12th-cent. context.
- 45-47. Hones made of fine-grained, finely laminated, non-calcareous buff sandstone. Possibly from the Pennines or the Drift.
45. Fragment with a wide groove.
75.25.214 A SF114, F49 L50, 15th-cent. context.
46. Fragment.
75.25.215 A SF520A, F116 L204, 13th-cent. context.
47. Fragment with a narrow groove.
75.25.216 A SF545B, F130 L268, 11th-cent. context.

STONE OBJECTS



Fig.177

48. Hone. Metamorphic rock, with mica and calcite. This rock is possibly only a variant of the other mica schists.
75.25.217 A SF520B, F116 L204, 13th-cent. context.
49. Hone. Fine-grained, compact, non-calcareous, sparsely-glaucconitic sandstone. ?Upper greensand. ?Provenance, presumably Hampshire or Wiltshire.
75.25.218 A SF3107B, F2554 L2016, 15th-cent. context.

STONE OBJECTS

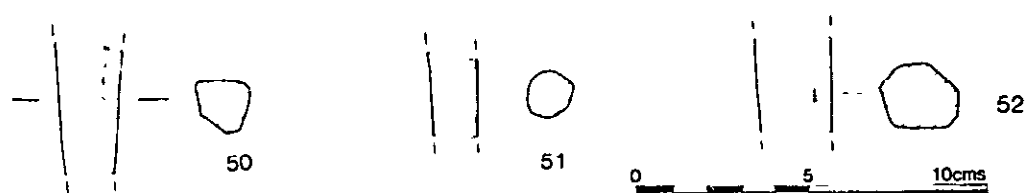


Fig. 1/8

50-52. Chalk Rods:

Chalk rods with irregular edge facets. Possibly for drawing but similar objects from Littlegate have a less regular rod-like form.

50. Fragment.

75.25.181 A SF586, F116 (L2049), 13th-cent. context.

51. Slightly tapering.

75.25.182 A SF589, F129 L104, 12th-cent. context.

52. Fragment.

75.25.183 A SF590, L350, undated context.

STONE OBJECTS

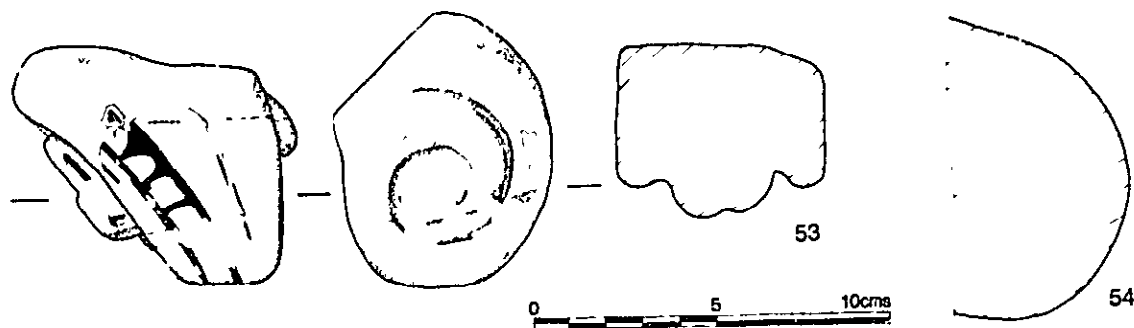


Fig.179

53-55. Architectural Fragments:

53. Fragment of an internal, sculptured stone, possibly a volute from a column head. Traces of paint survive: now coloured brown and gold, with apparently a ladder-pattern in black along the edge of the outer curved surface of the volute. The stone is probably a white, fine-grained, variety of Taynton stone, such as that found in the vicinity of the Windrush, Swinbrook and Sherbourne.

75.25.184 A SF75, F82 L83, early to mid 17th-cent. context.

54. Perhaps a fragment of a column or a pilaster. Probably a variant of Taynton stone with provenances as for No.53.

A SF1006, F1003 L1027, 13th-cent. context.

55. Architectural fragment? Not illustrated.

A SF3106, F1548, 14th-cent. context.

STONE OBJECTS

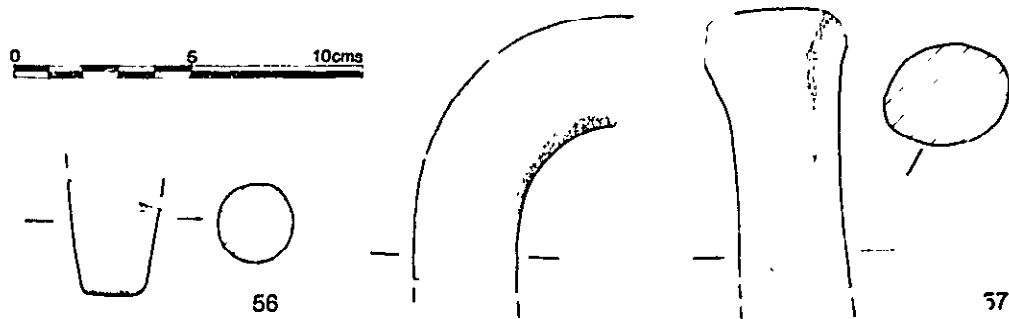


Fig.180

56. Conoid fragment, perhaps an off-cut from inside a vessel or part of decorated piece of architectural stonework.
Stone, as Nos.53-54.
A SF145, L2 (2M, 114/996), unstratified.
57. Curving and tapering, rod-like fragment. The surface is reddened, from burning? Possibly the handle of a vessel.
Stone, as Nos.53-54.
75.25.185 A SF2094, L2037, undated context.

STONE OBJECTS

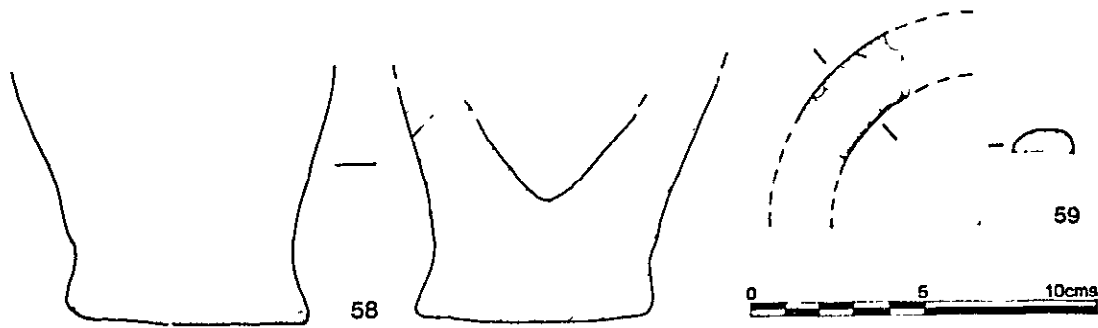


Fig. 181

58. Fragment possibly from a crude, pedestalled wick-lamp or a mortar. A small area of the internal surface that is smoothed is not sufficient to confirm the latter interpretation. Traces of burning at the base, externally, are visible. The type of stone (as Nos. 53-54) does not seem suitable for either use due to the great number of small voids present.
75.25.186 A SF1103, F1059 L2, 15th-cent. context.
59. Fragment of an annular bracelet? Some cutting marks (?) present. The material has a laminated structure and a small chip burned with a smoky flame when heated. Shale. A similar object was found at St. Aldates. [1]
75.25.187 A SF3119, F1534 L1, 11th-cent. context.

1. B. Durham, 'Archaeological Investigations in St. Aldates, Oxford', Oxoniensia, xliii (1978), Fig. 36, No. 1. A piece of unworked Kimmeridge shale was found in a layer dated to the late 10th or early 11th century at New Inn Court, C. Halpin, 'Late Saxon Evidence and Excavation of Hinxey Hall, Queen Street, Oxford', Oxoniensia, xlvi (1983), 67, Stone Objects Catalogue No. 3, L38/2. See also Site SEL, Selfridges, Nos. 71-76 in this catalogue.

STONE OBJECTS

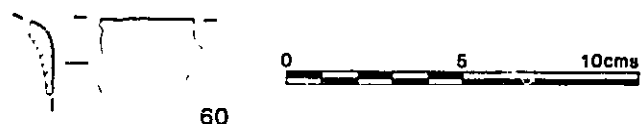


Fig.182

60. Fragment of shaped ?granite.
A SF3107A, F502 L2, 10th-cent. (or earlier) context.
61. Fragment of Kimmeridge shale. Unworked. Not illustrated.
A SF3120, F1015 L1093, 14th-cent. context. (context uncertain).

Missing Objects:

A SF170, L2	
A SF209, F63	
A SF512, F59 L180	Quern
A SF513, F59 L180	Holed stone
A SF515, F110 L185	Quern fragment?
A SF606, F512	Hone
A SF3051, F1019 L1204	Hone

Post-Medieval (not included in the Post-Medieval Catalogue):

A SF3332, F57 L57, mid to late 18th-cent. context, coal and cinder, no report.

A SF3333, F57, mid to late 18th-cent. context, siltstone, no report.

STONE OBJECTS

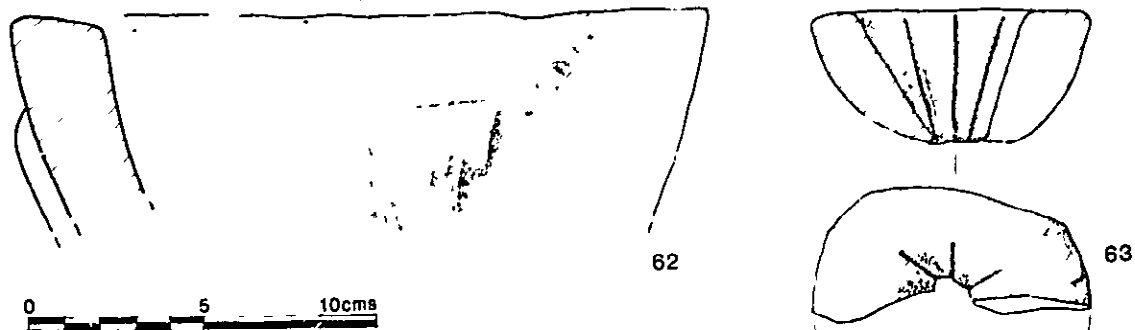


Fig. 183

Site B, Greyfriars

62. Comments by Martin Henig. Fragment from a mortar. [1] External tooling and a side projection are visible. Coarse white marble, imported from ?France (identification by H.P. Powell).
75.27.21 B II SF30, L1, unstratified.
63. Comments by Martin Henig. Small cresset lamp, broken (about half survives). Diameter 78mm. Height 40mm. Exterior, roughly rectangular. Interior, steeply sloping with grooved sides. [2] Local limestone, oolitic. Taynton stone (identification by H.P. Powell).
75.27.22 B XI SF1, L2, residual.

1. C. Platt and R. Coleman-Smith, Excavations in Medieval South 1953-1969. Vol. ii The Finds, (1975); G.C. Dunning in J.G. Hurst, 'The Kitchen area of Northolt manor, Middlesex', Medieval Archaeology, v (1961), 211-99.
2. Cf. N. Palmer, 'A Beaker Burial and Medieval Tenements in the Hamel, Oxford', Oxoniensia, xlv (1980), 195 No.15 and M 2 D06, also of Taynton stone but with grooves on the exterior rather than the inside.

STONE OBJECTS

Missing:

B IV SF45, F62 L2

M IV C6

STONE OBJECTS

Site D, Littlegate by Gwynno Oakley Not illustrated

- 64. Architectural fragment.
D I SF-- , F5 L2, 16th-cent. context.
- 65. Architectural fragment.
D I SF27. F43, undated context.
- 66. Stone.
D I SF40, L49, unstratified.
- 67. Chalk.
D I SF45, F50, late 12th- to early 13th-cent. context.
- 68. Chalk.
D I SF46, F51, late 12th- to early 13th-cent. context.
- 69. Lava, quern fragment.
D I SF74, F53, late 12th- to early 13th-cent. context.

STONE OBJECTS

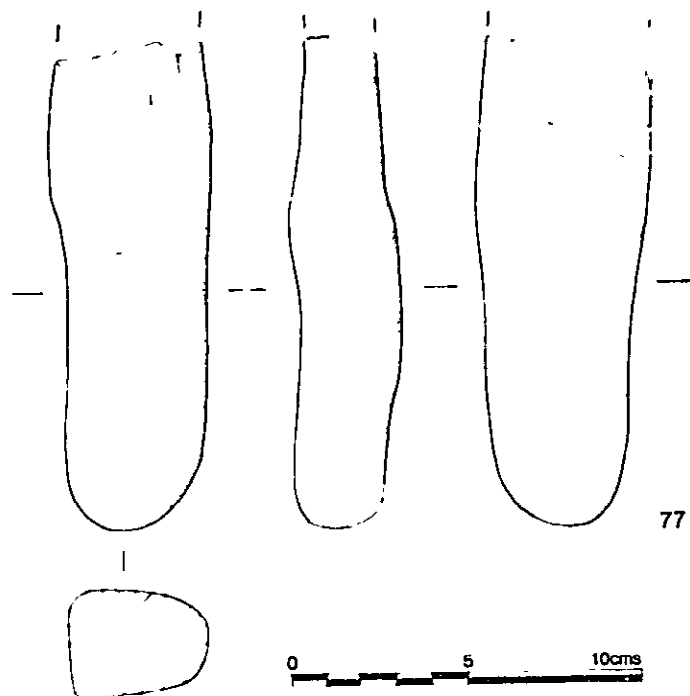


Fig.184

Site SEL, Selfridges by Gwynne Oakley

70. Arrowhead. Stone? Not illustrated.
SEL SF6, F12, 12th-cent. context, (+ intrusive 13th- to 14th-cent. sherds).
71. Kimmeridge shale. An oval fragment worked all around the curved edges, but the top and bottom are ?fractured along natural planes. Thickness 7-8mm. Diameter 29-32mm. Not illustrated.
SEL SF7, F22, 10th- to 11th-cent. context.
72. Kimmeridge shale. No visibly worked surface. Not illustrated.
SEL SF23, F63, 10th- to 11th-cent. context.
73. Kimmeridge shale. ?Knife cuts on one face. Not illustrated.
SEL SF24, F63, 10th- to 11th-cent. context.
74. Kimmeridge shale. Fragment, no visibly worked surface. Not illustrated.
SEL SF25, F63, 10th- to 11th-cent. context.
75. Kimmeridge shale. Fragment, no visibly worked surface. Not illustrated.
SEL SF26, F63, 10th- to 11th-cent. context.
76. Kimmeridge shale. Fragment, no visibly worked surface. Not illustrated.
SEL SF30, F96, 10th- to 11th-cent. context.
77. Bone, sandstone.
75.35.8 SEL SF29, F92, 10th- to 11th-cent. context.

STONE OBJECTS

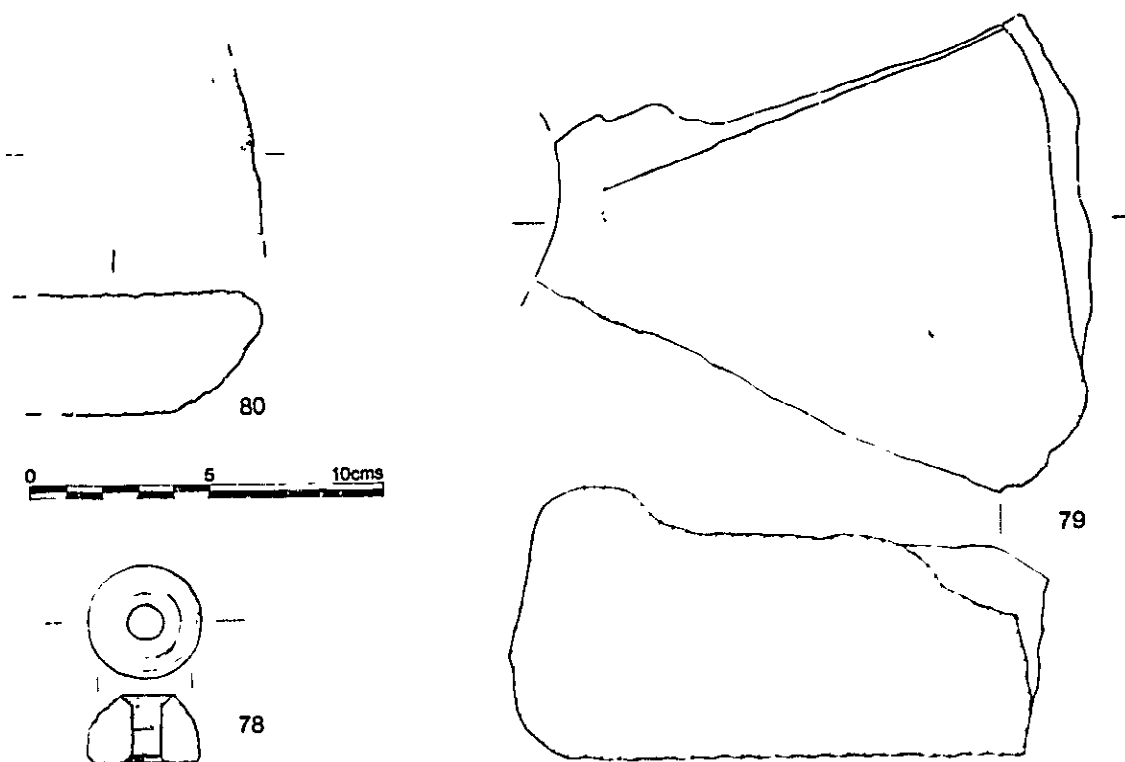


Fig.185

Site W, Westgate by Gwynne Oakley

- 78. Spindle whorl.
Height 18mm. Diameter 31mm.
75.26.2 W SF24, F97, 11th- to 12th-cent. context.
- 79. Lava quern fragment.
75.26.3 W SF63, F50 L6/3, 11th-cent. context.
- 80. Quern fragment.
W F69, F50 L8/2, undated context.
- 81. Worked stone. No comment. Not illustrated.
W SF84, F50 L8/2, undated context.
- 82. Stone. No comment. Not illustrated.
W SF85, F80, late 17th-cent. context.

STONE OBJECTS

Missing:

W SF25 F66?

W SF93, F50 L6 slag

Stone slates:

W F23

W F28

W F29

W F35?

W F46

W F50 L8/2 cobbles

W F89

W U/S

M IV C11

M IV C12

M IV C13

M IV C14

PAINTED WINDOW GLASS by JILL KERR

Fig.71 in print; Figs. 186-202 in fiche
Site A: 1-93; Site B: 94-183

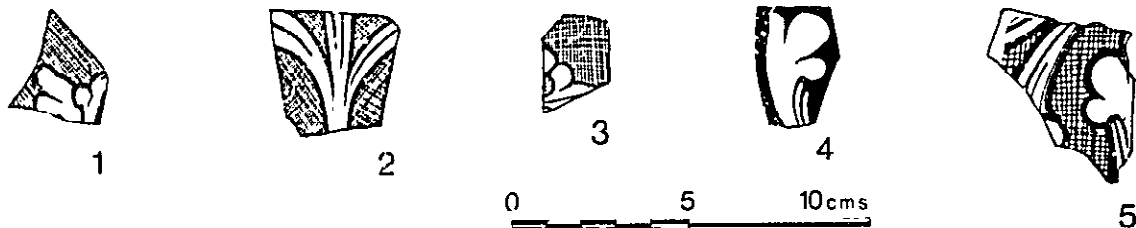


Fig.186

Site A, 31-34 Church St.
13th-Century Glass:

1. Fragment with a cross-hatched background. Brown paint on white glass. Very fine line. 13th-century geometric grisaille. A SF3117, L2 (2M, 114/1010), unstratified.
- 2-3. Two fragments of 13th-century geometric grisaille designs associated with the precisely cross-hatched smaller scale design of No.1. No.2 is a fragment of three veined stems radiating from a single source; No.3 is an incomplete part of a fleur-de-lys palmette design. A SF51/5/f, F82 L83, early to mid 17th-cent. context.
4. Fragment of a trefoil leaf terminal with a painted background. Grozed all round. White glass. A SF51/5/2, F82 L83, early to mid 17th-cent. context.
5. Fragment of 13th-century geometric grisaille. Cross-hatched background round a lobed stiff-leaf terminal. Two grozed edges. White glass. A SF1142, F1008, 15th-cent. context.

PAINTED WINDOW GLASS

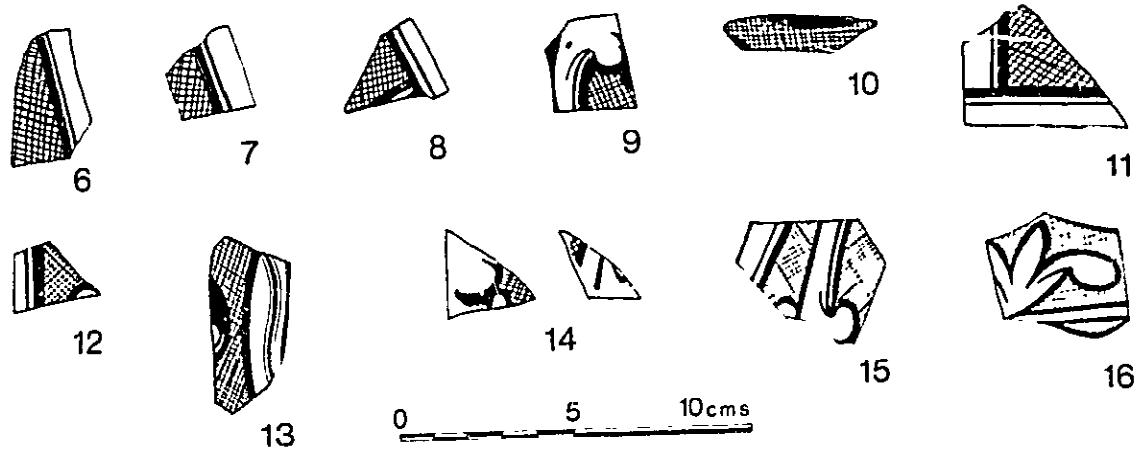


Fig.187

- 6-10. 13th-century geometric grisaille. Broken and incomplete fragments of cross-hatched backgrounds associated with double line borders (Nos.6-8), incomplete stiff-leaved veined stems and trefoil terminals and fruiting leaves (No.9 and also No.22). These designs are of large scale with cursive cross-hatching and group with Nos.5, 14-16, 18, 94-95.
 A SF51/5/c, F82 L83, early to mid 17th-cent. context.
- 11-12. No.11 is a corner piece with a double line border to cursive large scale geometric grisaille cross-hatching. No.12 is a small fragment of a similar design with part of a foliate terminal.
 A SF51/5/g, F82 L83, early to mid 17th-cent. context.
13. Part of a 13th-century stiff-leaf design with wavy double line stem or border motif. Same scale and group as Nos.6-10.
 A SF51/5/d, F82 L83, early to mid 17th-cent. context.
14. Small fragments of white, 13th-century, geometric grisaille glass.
 A SF1148, F1023 L1122, mid 17th-cent. context.
15. Fragment of 13th-century geometric grisaille. Broad line, cross-hatched background on white glass.
 Site A, unstratified.
16. Fragment of geometric grisaille design. Part of a boss? Trefoil leaf adjacent to a border or stem. Green glass. 13th century.
 Site A, unstratified.

PAINTED WINDOW GLASS

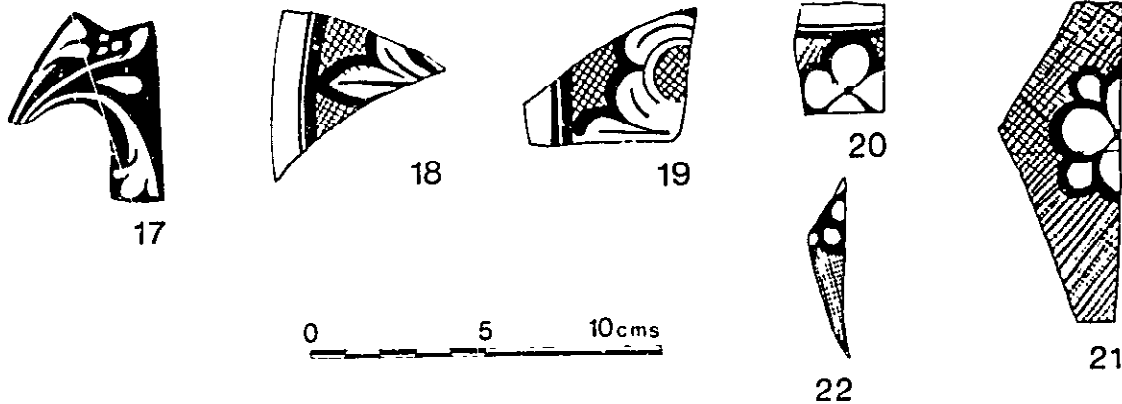


Fig.188

17. Green glass. 13th-century geometric grisaille. Similar to No.16 but without the cross-hatching. The design is picked out of a matt wash. Very brown paint. Grozed all round.
Site A, unstratified.
18. 13th-century geometric grisaille. Trefoil leaf design, part of a background or central boss. White glass.
Site A, unstratified.
19. A large fragment of a veined fleur-de-lys linked palmette design with a double line border set on a cross-hatched background.
A SF51/5/g, F82 L83, early to mid 17th-cent. context.
20. 13th-century geometric grisaille. A quatrefoil border design with central boss and petal divisions set in a double line border.
A SF51/5/c, F82 L83, early to mid 17th-cent. context.
21. A fragment of a quatrefoil with central boss and petal divisions and subordinate petals set in the interstices. The design is centred in an unbordered cross-hatched background of the large scale, cursive type.
A SF57 and 72.
22. 13th-century geometric grisaille. Cross-hatched background.
A SF51/5/c, F82 L83, early to mid 17th-cent. context.
23. Fragment of 13th-century geometric grisaille. Not illustrated.
Site A, unstratified.

PAINTED WINDOW GLASS

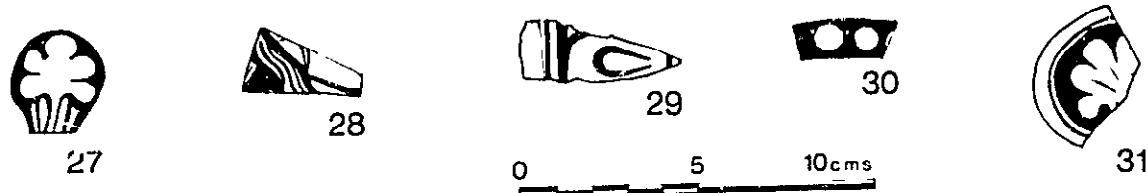


Fig.189

13th- to 14th-Century Glass

24. Large fragment of white glass with a floral design? Stained yellow.
14th century. Not illustrated.
A SF1109, L2 (2M, 108/1000), unstratified.
25. Fragment of curiously polished geometric design? Too opaque to
discern colour. 14th century. Not illustrated.
A SF3116, L2 (2M, 116/1002), unstratified.
26. Fragment of unidentifiable glass with painted lines. 14th century.
Not illustrated.
27. Fragment of a leaf terminal to a foliage design. Broken at the base.
Grozed round. White glass. 13th to 14th century. See also No.75.
A SF72/5, F54 L54, early to mid 19th-cent. context.
28. Fragment of a large design too small to identify. Wavy hair with
washes either side. White glass. 14th century.
A SF72/5, F54 L54, early to mid 19th-cent. context.
29. Fragment of a border design. Too small to identify. Three types of
paint were used: brown for the linework, and grey and dark brown
washes. The grey wash is unusual. White glass. 14th century.
A SF72/5a, F54 L54, early to mid 19th-cent. context.
30. Fragment of a beaded border. Thin strip on white glass. 14th
century.
A SF72/5a, F54 L54, early to mid 19th-cent. context.
31. Fragment of a circular boss (?) with a line border and a central
foliage palmette design. Blue glass. Possibly part of a tracery
light design. 13th to 14th century.
A SF72/2, F54 L54, early to mid 19th-cent. context.

PAINTED WINDOW GLASS

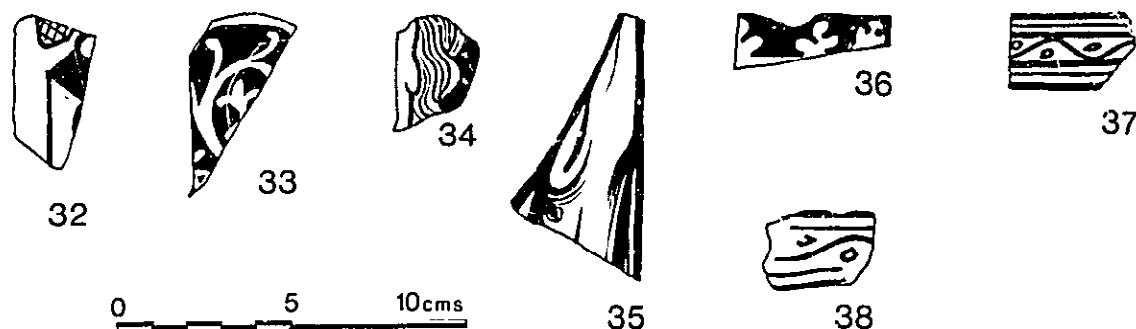


Fig.190

32. Fragment of an architectural canopy design, similar to No.106. Part of a buttress and window? Stained yellow. White glass. 14th century.
A SF72/5a, F54 L54, early to mid 19th-cent. context.
33. Fragment of an Arabesque background. A foliage design picked out of a matt wash. Blue glass. 1325-50.
A SF72/2, F54 L54, early to mid 19th-cent. context.
34. Fragment of hair painted in very brown paint. One side grozed. White glass. 14th century.
A SF51/5/2, F82 L83, early to mid 17th-cent. context.
35. Fragment of drapery. Two long edges grozed. White glass. 14th century.
A SF51/5/2, F82 L83, early to mid 17th-cent. context.
36. Fragment of an architectural or a foliage design. Three trefoils or crockets picked out of a matt wash. White glass. 14th century.
A SF51/5/2, F82 L83, early to mid 17th-cent. context.
37. Fragment of a serpentine border with circles alternating. Triple line border with circles alternating. Triple line border painted on a white glass stained yellow. Three sides grozed. 14th century.
A SF51/5/b, F82 L83, early to mid 17th-cent. context.
38. A serpentine border design with dots and edge lines. Similar to No.37 but looser in execution.
A SF51, F82 L83, early to mid 17th-cent. context.

PAINTED WINDOW GLASS

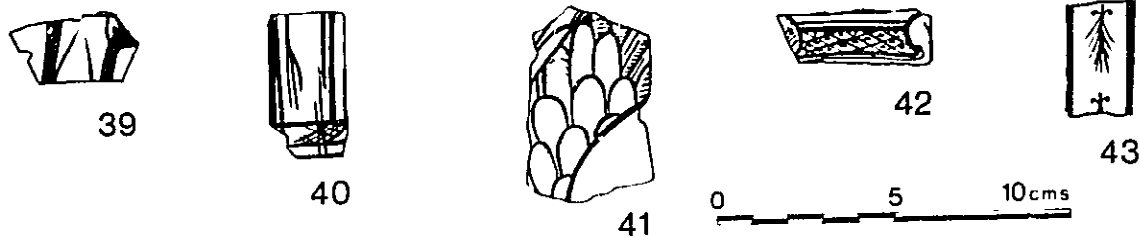


Fig. 191

39. Fragment of drapery. White glass. 14th century.
A SF51/5/2, F82 L83, early to mid 17th-cent. context.
40. Fragment of drapery, possibly part of a pallium. Cross-hatched design at the bottom. Grozed on three sides. White glass. 14th century.
A SF51/5/b, F82 L83, early to mid 17th-cent. context.
41. A fragment of a 15th-century wing design, the feathers defined with wash and stipple and fine line shading.
A SF51/5/f, F82 L83, early to mid 17th-cent. context.
42. Fragment of a border design or cresting. Cross-hatched strip with dots in the diamonds and a foliage design at either end. Ochre glass. 14th century.
A SF51/5/b, F82 L83, early to mid 17th-cent. context.
43. Fragment of ermine in a strip (one complete and one incomplete), within a line border. Part of an ermine hem. White glass. 14th century.
A SF51/5/b, F82 L83, early to mid 17th-cent. context.
44. Small fragment of painted glass. Not identifiable. 14th century?
Not illustrated.
45. Fragment of clear glass with serpentine trail. 14th century. Not illustrated.
Site A, unstratified.

PAINTED WINDOW GLASS

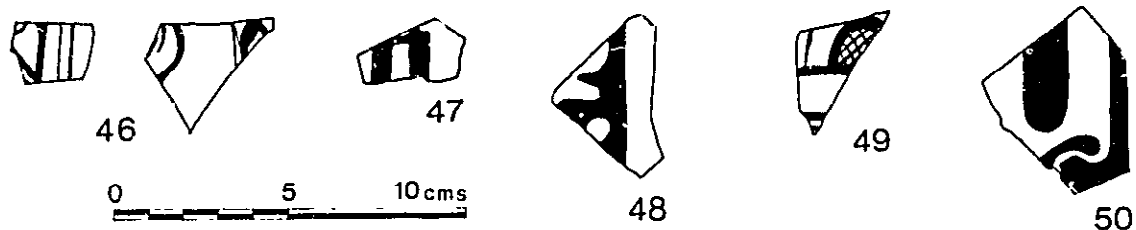


Fig.192

14th- to 15th-Century Glass:

46. Two fragments of 15th-century white glass. No further identification possible. Very pronounced yellow stain on one fragment. A SF72, F54 L54, early to mid 19th-cent. context.
47. Fragment of a black letter inscription. Letter 'n'? White glass. 14th to 15th century. A SF512/5/2, F82 L83, early to mid 17th-cent. context.
48. Fragment of a foliage design picked out of a matt wash. 14th to 15th century. A SF51/5/2, F82 L83, early to mid 17th-cent. context.
49. Fragment of an architectural design. Similar to No.106. White glass. 15th century. A SF51/5/2, F82 L83, early to mid 17th-cent. context.
50. Fragment of drapery. Two types of wash, one thick brown and one light brown. White glass. 14th to 15th century. A SF51/5/b, F82 L83, early to mid 17th-cent. context.
51. Fragment with a yellow-stained, tre-foil cusp? 15th century. Not illustrated. Site A, unstratified.
52. Fragment similar to No.105. An architectural design. White glass. 15th century. Not illustrated. Site A, unstratified.

PAINTED WINDOW GLASS

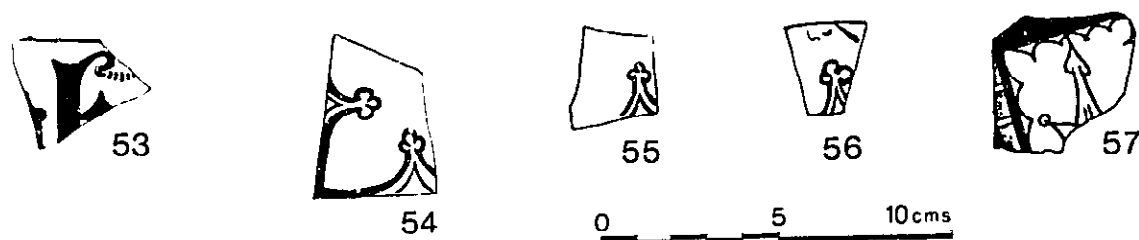


Fig.193

53. Fragment with a black letter inscription. An 'h'. 15th century. Site A, unstratified.
54. Fragment with two trefoil terminal cusps. Too fragmentary to determine design. White glass. 14th century. Site A, unstratified.
- 55-57. Fragments of 15th-century quarry designs with trefoiled cusps (Nos.55-56) similar to No.54. No.57 has a yellow stain on the exterior and is bordered with multi-cusping; this may have been from a border design. None is complete enough to establish the type. A SF51/5/e, F82 L83, early to mid 17th-cent. context.
58. Fragment with the same design (ermine) and dimensions as No.43. It is however more bushy. Brown paint border. Three edges grozed. Not illustrated. 14th to 15th century.

PAINTED WINDOW GLASS

Remaining Glass from A F82 L83, an early to mid 17th-century context.
Not illustrated:

This group of glass is extremely fragmented and deteriorated with no complete designs or pieces. All the numbered groups contained very small fragments of white glass, some bearing paint, but none large enough to distinguish the design.

59. A small collection of pot metal blue glass, unpainted, exterior corroded.
A SF51/1, F82 L83.
60. Fragments of foliage design picked out of and painted on blue glass.
Cf. Nos. 101, 107, 108, 129, 138 etc.
A SF51/2, F82 L83.
61. Pieces of drapery on white glass; brown stippled wash on line paint.
A SF51/4, F82 L83.
62. Small fragment of feathers identical to No. 41. Pieces of stiff-leaved foliage designs without cross-hatched backgrounds similar to Nos. 4 and 17; found in association with broken pieces of veined stem.
A SF51/5/a, F82 L83.
63. A piece of white glass painted with cursive lines in bold red/brown paint; the piece is too small to discern the nature of the design which has an unpainted square off-centre. Fragments of serpentine stem border on white glass as No. 37 and also some pieces of beaded border as No. 30. A fragment of a further design may be part of a border of scallops with heart-shaped terminals as No. 76.
A SF51/5/b, F82 L83.
64. Fragments of drapery in washes on white glass.
A SF51/6, F82 L83.
65. A piece of murrey with both surfaces shaded off. 15th or 16th century. Pieces of emerald-hued green pot metal glass some painted with drapery, others with pieces of border like No. 76. Also 15th or 16th century? Fragments of drapery on white glass.
A SF51/7, F82 L83.
66. Several fragments of unpainted flashed ruby glass including pieces of strip 19mm. wide.
A SF51/9, F82 L83.
67. One fragment of architecture, now shattered and undecipherable.
A SF51, F82 L83.

PAINTED WINDOW GLASS



Fig.194

Glass of Uncertain Date:

68. Fragment of the same design as No.31. Not illustrated.
A SF3115, L2 (2M, 110/998), unstratified.
69. Fragment of a foliage design. Similar to the blue designs of Nos.107-108. Very finely painted. Clear glass.
A SF72/5/b, F54 L54, early to mid 19th-cent. context.
70. Fragment of blue glass with a foliage design.
A SF72/2, F54 L54, early to mid 19th-cent. context.
71. Plain ruby glass. Three edges grozed. Concave twice, convex once.
Not illustrated.
A SF84, F78 L97, 16th-cent. context.
72. Unidentifiable fragment of clear, unpainted glass. Not illustrated.
A SF1146, F1018 L1038, 13th-cent. context.
73. Centre of crown glass showing a pontil mark.
A SF3118, F1516 L1, 13th-cent. context.
74. Fragments of plain blue glass. Not illustrated.
A SF3026, F1057, 13th-cent. context.
75. Terminal of geometric grisaille boss or formalised foliage design.
White glass. Grozed all round, broken at the base. See also No.27.
Site A, unstratified.
76. Fragment of green glass. A border strip with double scallop.
Site A, unstratified.

PAINED WINDOW GLASS

77. Fragment of ruby glass. Grozed all round. Not illustrated.
Site A, unstratified.
78. Fragment of ruby glass. Part of a broken border? Not illustrated.
Site A, unstratified.
79. Fragment with a foliage design picked out of a matt wash. Corrosion
on the exterior. Not illustrated.
Site A, unstratified.
80. Fragment of plain blue glass. Not illustrated.
Site A, unstratified.
81. Fragment of plain ruby glass. Not illustrated.
Site A, unstratified.
82. Fragment of plain blue glass. Not illustrated.
Site A, unstratified.
83. Fragment of blue glass with a drapery design. All edges grozed. Not
illustrated.
Site A, unstratified.
84. Fragment of a beaded border strip. Grozed all round. Not
illustrated.
Site A, unstratified.
85. Three fragments of blue glass. Not illustrated.
Site A, unstratified.
86. Fragment of white glass. Not illustrated.
Site A, unstratified.
87. Two plain white fragments. Not illustrated.
Site A, unstratified.
88. Fragment of a serpentine stem. Cf. No.33. Not illustrated.
Site A, unstratified.
89. Two fragments of white glass. Not illustrated.
Site A, unstratified.
90. Fragment of cross-hatched diaper with dots in diamonds. Cf. No.42.
Not illustrated.
Site A, unstratified.
91. Fragment of plain red glass. Not illustrated.
Site A, unstratified.
92. Fragment of plain blue glass. Not illustrated.
Site A, unstratified.
93. Fragment of plain white glass. Not illustrated.
Site A, unstratified.

PAINTED WINDOW GLASS

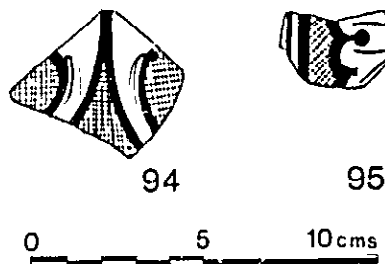


Fig.195

Site B, Greyfriars

13th-Century Glass:

- 94. Fragment of 13th-century geometric grisaille.
B XI SF--, F4, undated context.
- 95. Border fragment of 13th-century geometric grisaille.
B XXXIII SF15, F19, early 17th-cent. context.



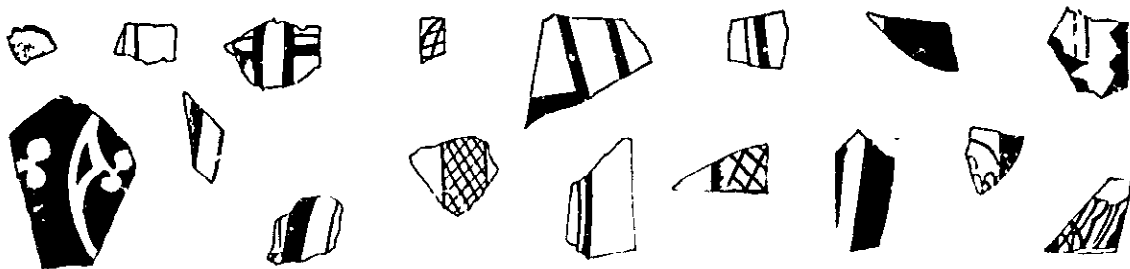
96



Fig.196

14th- to 15th-Century Glass:

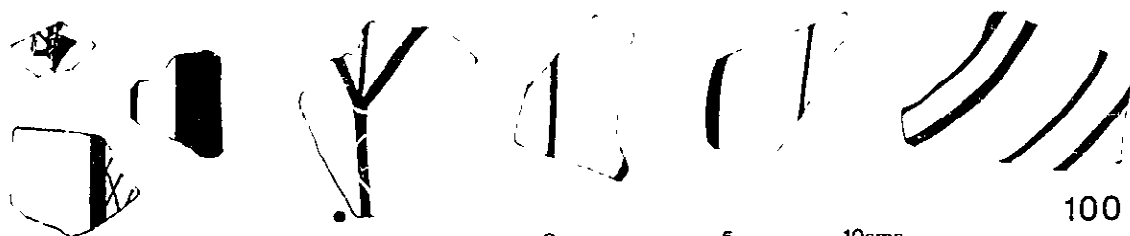
- 96. Hand; a right hand with the palm open and the thumb upraised. Part of the sleeve attached.
B X SF10/5b, F21, undated context.



97



98



100

Fig.197

97. Architectural fragments and a cusped nimbus(?) (the latter not illustrated) picked out of a matt wash. The largest fragments have cross-hatching for picture windows stained yellow associated with painted lines filled in with a wash. White glass.
B X SF15, F21, undated context.
98. Diaper design probably from a border. Criss-cross with circles in centres picked out of a matt wash on white glass.
B XIII SF1, L1, unstratified.
99. Part of a border design diaper picked out of a matt wash with circles in the diamonds. Probably associated with 13th-century geometric grisaille designs, it is identical to No.98. Not illustrated.
B XIII SF1, L1, unstratified.
100. White glass fragments with large architectural or drapery designs. Two different washes. Large scale bold line painting. Cf. No.106.
B IV SF51, L1, early 19th-cent. context.

PAINTED WINDOW GLASS

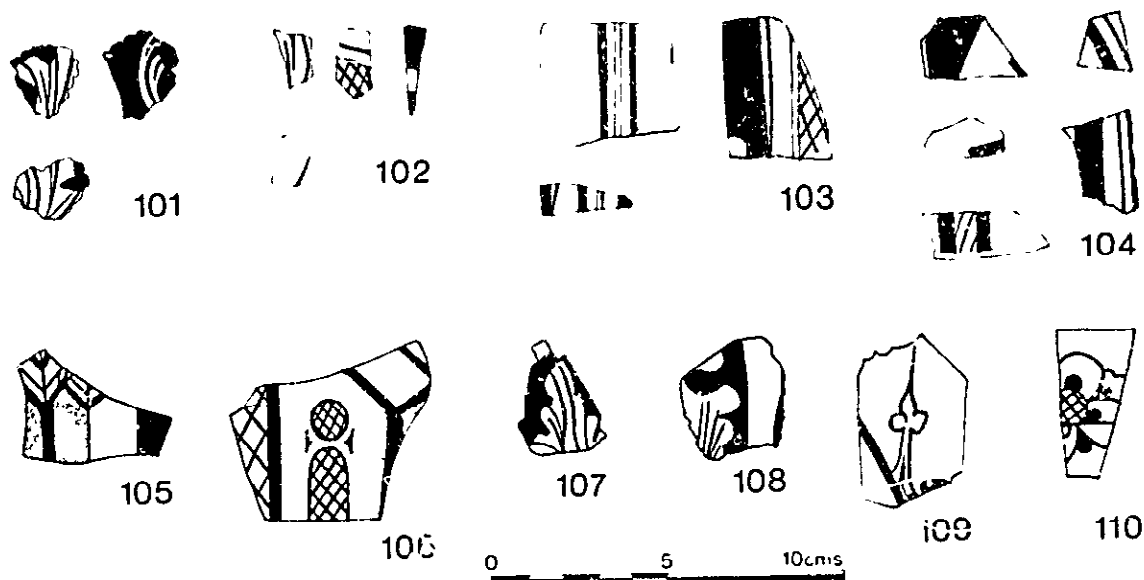


Fig.198

101. Fragments of blue foliage design picked out of a matt wash and with painted veins. Cf.Nos.107-108.
B IV SF51, L1, early 19th-cent. context.
102. Fragments of architecture or drapery.
B IV SF51, L1, early 19th-cent. context.
103. Fragments of an architectural design. Cf.No.106. One fragment with backpainting.
B IV SF51, L1, early 19th-cent. context.
104. Fragments of architecture or drapery.
B IV SF51, L1, early 19th-cent. context.
- 105-106. Fragments of architectural design, canopy or side shafts? Stippled contour wash on No.105; No.106 has picture window designs of two scales.
B IV SF10, L2, post-medieval destruction layer.
- 107-108. Fragments of foliage design on blue glass.
B IV SF10, L2, post-medieval destruction layer.
109. Part of a quarry type, incomplete, painted on flashed blue.
B IV SF10, L2, post-medieval destruction layer.
110. Floral design, possibly the centre of a quarry, incomplete, type uncertain. White glass.
B IV SF10, L2, post-medieval destruction layer.

PAINTED WINDOW GLASS

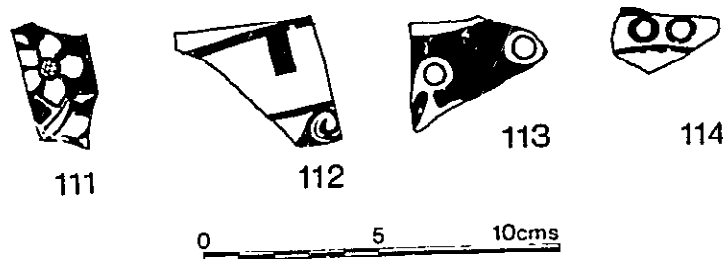


Fig.199

111. Floral design of cinquefoil flower with stem and foliage picked out of a matt wash with veins and cross-hatched centre of flower painted on white glass. Cf. Nos. 37 and 175.
B IV SF10, L2, post-medieval destruction layer.
112. Fragment of an architectural design? White glass.
B IV SF10, L2, post-medieval destruction layer.
113. Fragmentary design. White glass, stained yellow.
B IV SF10, L2, post-medieval destruction layer.
114. Beaded border or costume detail. Blue glass?
B IV SF10, L2, post-medieval destruction layer.
115. 15th-century fragments of drapery, including a yellow ochre fragment and another with backpainting. Not illustrated.
B IV SF24, L4, post 16th-cent. context.
116. Late 15th-century fragments, including a fragment of floor tile design and a drapery design with backpainting. Not illustrated.
B IV SF24, L4, post 16th-cent. context.
117. 15th-century glass of good quality, still translucent. Design uncertain. Yellow stain. Additional decayed fragments. Not illustrated.
B IV SF37, L5, 16th-cent. context.
118. Fragments of 15th-century white and painted glass. Not illustrated.
B IV SF30, L10, undated context.
119. Architectural fragment. 15th Century. Not illustrated.
B IV SF58, F112, post-medieval robber trench.

PAINTED WINDOW GLASS

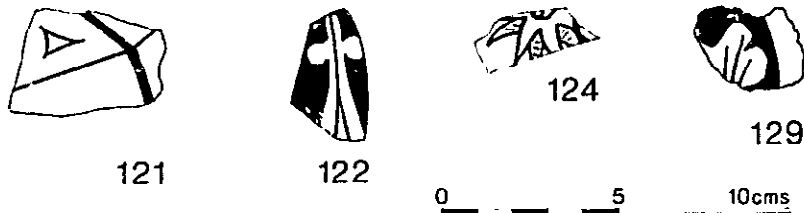


Fig.200

120. Architectural fragment. Traces of paint. 15th Century. Not illustrated.
- B VI SF39, L12, 16th-cent. context.
121. White glass. Architectural design. 15th Century.
- B VI SF36, F22, post-medieval context.
122. Architectural design, possibly a finial. 15th Century?
- B X SF10, F21, undated context.
123. Fragments of 15th-century(?) ruby glass. Not illustrated.
- B X SF10, F21, undated context.
124. 15th-Century quarry fragment, too incomplete to type.
- B X SF10, F21, undated context.

Glass of Uncertain Date:

125. Decayed fragment. Not illustrated.
- B I SF1, L1, unstratified.
126. Quarry type. Incomplete flower design, petals radiating from a central circle. White glass. Not illustrated.
- B III SF--, F5, early to mid 17th-cent. context.
127. Fragment of blue glass. Not illustrated.
- B III SF--, F5, early to mid 17th-cent. context.
128. White glass fragments. The paint has peeled off. Not illustrated.
- B IV SF43, L1, unstratified.
129. Fragments of white and painted glass. Cross-hatched design, Cf.No.106. Floral design? Cf.Nos.107-108.
- B IV SF52/2, L1, unstratified.

PAINTED WINDOW GLASS

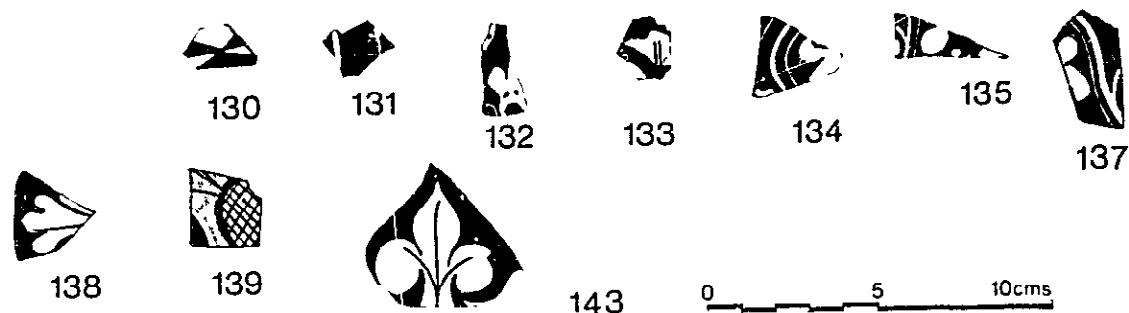


Fig.201

- 130-135. Thin glass. Foliage and architectural designs. No.130, a fragment of geometric floor design? White glass. No.131 is stained yellow. B IV SF10, L2, post-medieval destruction layer?
136. Border fragment, unpainted strip. Grozed on three sides. Not illustrated.
B IV SF47, L3, post-medieval context.
- 137-138. Foliage design. Cf.Nos.111 and 175.
B IV SF23, L5, 16th-cent. context.
139. Architectural design, or the central boss of a floral design.
B IV SF23, L5, 16th-cent. context.
140. Fragment of a foliage design, blue glass. Cf.Nos.107-108. Not illustrated.
B IV SF24, L4, post 16th-cent. context.
141. Fragments of white glass. Not illustrated.
B IV SF24, L4, post 16th-cent. context.
142. Fragments of architectural design. White glass. Not illustrated.
B IV SF24, L4, post 16th-cent. context.
143. Fragment of white glass with trefoil design.
B IV SF24, L4, post 16th-cent. context.
144. Fragments of white glass with wash. Not illustrated.
B IV SF24, L4, post 16th-cent. context.
145. Architectural fragment with the same design as No.106. Canopy or side shafts? Not illustrated.
B IV SF31, L4, post 16th-cent. context.
146. Fragments of glass in very poor condition. Not identifiable. Not illustrated.
B IV SF33, L4, post 16th-cent. context.
147. Small fragments of painted glass. Not illustrated.
B IV SF38, L5, 16th-cent. context.

PAINTED WINDOW GLASS

148. Fragments of white glass with paint. Not illustrated.
B IV SF57, L5, 16th-cent. context.
149. Fragment of blue glass. Not illustrated.
B IV SF26, L17, early 17th-cent. context.
150. Decayed painted glass. Not illustrated.
B IV SF22, L21, undated context.
151. Fragment of white glass with traces of paint. Not illustrated.
B IV SF50, L25, post-medieval destruction layer.
152. Decayed fragment, no colour or design visible. Not illustrated.
B IV SF13, F34, post-medieval context.
153. Fragment of plain blue glass. Not illustrated.
B IV SF19, F43, 16th-cent. context.
154. Fragment of white glass with two parallel lines? Not illustrated.
B IV SF19, F43, 16th-cent. context.
155. Drapery fragment. White glass. Not illustrated.
B IV SF--, F43, 16th-cent. context.
156. Drapery fragment. White glass. Not illustrated.
B IV SF--, F49, mid to late 17th-cent. context.
157. No comment. Not illustrated.
B IV SF--, F83, undated context.
158. No comment. Not illustrated.
B IV SF54, F112, post-medieval, robber trench.
159. White glass with paint. Not illustrated.
B VI SF3, L2, unstratified.
160. Fragment. Cf. No. 106. Not illustrated.
B VI SF4, L2, unstratified.
161. No comment. Not illustrated.
B VI SF7, F2, post-medieval, robber trench.
162. Various fragments including one large piece of unpainted blue glass and one piece of red glass with a very incomplete foliage design. Not illustrated.
B VI SF22, L12, 16th-cent., fill of robber trench.
163. No comment. Not illustrated.
B VI SF33, L12, 16th-cent., fill of robber trench.
164. Various fragments. Very opaque. Ir.distinguishable. One fragment with drapery.
Additional fragments of foliage, architecture and drapery. Not illustrated.
B VI SF45, L12, 16th-cent., fill of robber trench.

PAINTED WINDOW GLASS

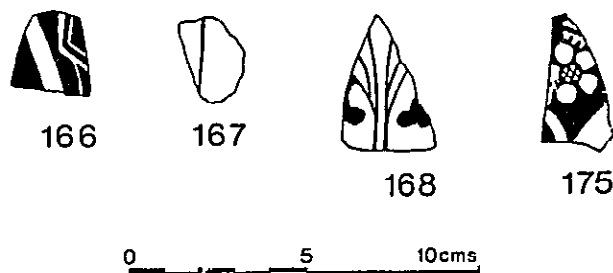


Fig.202

165. Blue glass fragments with foliage design. Cf.Nos.107-108. Not illustrated.
 B VI SF21, L13, late 17th-cent. context.
- 166-168. Various fragments. No.166, architectural fragment. Geometric design. Clear glass. No.168, blue foliage design? Two grozed edges.
 B VI SF42, L14, post-medieval, fill of robber trench.
169. Missing. Not illustrated.
 B VI SF35, F18, late 17th-cent. context.
170. Architectural and drapery fragments. Cf.No.106. Not illustrated.
 B VI SF26, F21, late 17th-cent. context.
171. Fragment. No comment. Not illustrated.
 B VI SF29, F22, post-medieval context.
172. Blue foliage design. Not illustrated.
 B VI SF36, F22, post-medieval context.
173. Drapery design. Clear glass. Not illustrated.
 B VI SF43, F26, post-medieval context.
174. No comment. Not illustrated.
 B VII SF8, F8, undated context.

PAINTED WINDOW GLASS

175. Fragment. Cf.No.106. Fragment (illustrated), floral design.
Cf.No.111. Additional fragments. Architectural fragments.
Cf.No.106. Examples of drapery and architectural designs.
Yellow stained glass. Not illustrated.
B X SF10, F21, undated context.
176. Fragments, including one of a beaded border. Not illustrated.
B XII SF1, L1, unstratified.
177. No comment. Not illustrated.
B XII SF2, L4, post-medieval, fill of robber trench.
178. No comment. Not illustrated.
B XII SF4, F5, medieval context.
179. Fragment of plain ochre. Not illustrated.
B XIII SF1, L1, post-medieval destruction layer.
180. Architectural fragments. Not illustrated.
B XIV SF6, L12, medieval context.
181. Decayed. Not illustrated.
B XIV SF4, L13, medieval context.
182. Fragment of white glass. Not illustrated.
B XXXIII SF19, F8, post-medieval context.
183. No comment. Not illustrated.
B XXXIII SF8, F10, post-medieval context.

Two fragments of post-medieval window glass were found in addition to those described in the post-medieval report:

- B VI SF14, F4, early 19th-cent. context.
B VI SF15, F4, early 19th-cent. context.

M IV E7

DAUB by JULIAN MUNBY

List of contexts, by century, with daub.

Site A, Church St.

10th C. or earlier.

<u>Context</u>	<u>Fragments</u>	<u>Weight</u>
A F502 L3	3	40gm
A F504 = F502	1	60gm
A F512	5	30gm
A F2542	2	30gm

11th C.

<u>Context</u>	<u>Fragments</u>	<u>Weight</u>
A F130 L268	3	50gm
" L270	1	50gm
A F500	3	25gm
A F1503 L2	1	10gm
A F1519 L2	3	150gm
A F1520 L3	3	35gm
A F1522 L3 daub?	1	50gm
A F1534 L1	2	75gm
A F1539 L1	1	35gm
A F1541	3	150gm

12th C.

<u>Context</u>	<u>Fragments</u>	<u>Weight</u>
A F1527 L2	2	40gm
A F2503 L1	1	25gm
" L2	3	50gm
A F2515 L2	2	35gm
A F2520 L1	13	115gm

DAUB

13th C. <u>Context</u>	<u>Fragments</u>	<u>Weight</u>
A F101 L172	2	110gm
A F116	3	275gm
" L233	1	190gm
" L204a	5	400gm
" L267	13	500gm
A F140 L306	2	90gm
A F501 daub?	3	15gm
A F1035 L1206	2	25gm
A F1517 L1	1	15gm
A F1540	4	75gm
A F2501	2	25gm

14th C. <u>Context</u>	<u>Fragments</u>	<u>Weight</u>
A F1019	2	15gm
A F1525 L3	3	30gm

15th C. <u>Context</u>	<u>Fragments</u>	<u>Weight</u>
A F1006	2	50gm

Post-Medieval <u>Context</u>	<u>Fragments</u>	<u>Weight</u>
A F114 L198	7	180gm

DAUB

Early 17th C.

<u>Context</u>	<u>Fragments</u>	<u>Weight</u>
A F71 L44	8	200gm

Late 17th C.

<u>Context</u>	<u>Fragments</u>	<u>Weight</u>
A F44 L47	384	10.26K
" L202	11	390gm
A F55 L55	1	240gm

Site D, Littlegate

<u>Context</u>	<u>Fragments</u>	<u>Weight</u>	<u>Date of Context</u>
D IV F119, SF69	1	10gm	13th-cent.
Lime encrustation with wood impressions			
D IV F119, SF70	1	5gm	13th-cent.
Lime encrustation with wood impressions			
D IV F120, SF68	2	45gm	Undated

Site SEL, Selfridges

<u>Context</u>	<u>Fragments</u>	<u>Weight</u>	<u>Date of Context</u>
SEL F5, SF31	1	50gm	11th C.
SEL F86, SF28	2	40gm	10th to 11th C.

Site W, Westgate

<u>Context</u>	<u>Fragments</u>	<u>Weight</u>	<u>Date of Context</u>
W U/S, SF61	1	30gm	Undated

M IV E11

M IV E12

M IV E13

M IV E14

PAINTED WALL PLASTER by JULIAN MUNBY

List of contexts with wall plaster

Site A, Church St.

<u>Context</u>	<u>Fragments</u>	<u>Weight</u>	<u>Date of Context</u>
A F2521 L1, SF310B White	1	20gm	13th C.
A F2521 L3 Cream	1	30gm	13th C.
A F2531, SF3334	10	100gm	16th C.

Site B, Greyfriars

Listed in trench order

<u>Trench I Context</u>	<u>Fragments</u>	<u>Weight</u>	<u>Date of Context</u>
B I F12 L3, SF3 Red paint	1	80gm	Undated
<u>Trench II Context</u>	<u>Fragments</u>	<u>Weight</u>	<u>Date of Context</u>
B II U/S, SF20 Red lines on white and cream	1	20gm	Undated
B II U/S, SF18 White lines on yellow	8	450gm	Undated
B II U/S, SF4 White lines on yellow	23	675gm	Undated

PAINTED WALL PLASTER

<u>Context</u>	<u>Fragments</u>	<u>Weight</u>	<u>Date of Context</u>
B II U/S, SF19 Painted yellow	3	30gm	Undated
B II U/S, SF21 Painted yellow	1	35gm	Undated
B II L1, SF28 Red lines on cream	1	25gm	Undated
B II L2, SF27 Red lines on cream	2	90gm	Undated
B II L3, SF26 Red lines on cream	5	210gm	Undated
B II L3, SF29 Red lines on cream	1	60gm	Undated
B II L8, SF16 Red lines on cream	c.100	800gm	Undated
B II F10, SF31 Red lines on cream	5	115gm	Undated (burial)
B II F14, SF36 Red lines on cream	1	10 gm	Undated (burial)
B II F18, SF32 Red lines on cream and red lines on yellow	3	65gm	Undated (robber trench of Ph.IV wall)
B II F18, SF33 Red lines on cream	4	60gm	Undated (robber trench of Ph.IV wall)

PAINTED WALL PLASTER

<u>Context</u>	<u>Fragments</u>	<u>Weight</u>	<u>Date of Context</u>
B II F18, SF35 Red lines on cream	2	50gm	Undated (robber trench of Ph.IV wall)
B II F22, SF34	1	20gm	Undated (burial)
B II F32, SF22	1	10gm	Undated

<u>Trench III Context</u>	<u>Fragments</u>	<u>Weight</u>	<u>Date of Context</u>
B III F4 L2, SF6	1	20gm	Late 17th C.

<u>Trench IV Context</u>	<u>Fragments</u>	<u>Weight</u>	<u>Date of Context</u>
B IV F13, SF81 White lines on yellow	5	235gm	Mid to late 17th C.
B IV F33, SF82	1	45gm	Early to mid 13th-cent?
B IV F50, SF28 Graffiti, Fig. 76 (Mus. Acc. No. 75.27.23)	1	130gm	Undated (burial)
B IV F60, SF40 Red lines on cream	1	30gm	Undated

<u>Trench XIII Context</u>	<u>Fragments</u>	<u>Weight</u>	<u>Date of Context</u>
B XIII L1, SF5 Red lines on white	6	25gm	Post-medieval (destruction layer)

PAINTED WALL PLASTER

Trench XIV

<u>Context</u>	<u>Fragments</u>	<u>Weight</u>	<u>Date of Context</u>
B XIV F7, SF2	1	20gm	Undated (robber trench)
B XIV L12, SF7	4	30gm	Undated

Site D, Littlegate

<u>Context</u>	<u>Fragments</u>	<u>Weight</u>	<u>Date of Context</u>
D I L14, SF34	6	130gm	Late 12th- to mid 13th-cent.

Sandy plaster

Site W, Westgate

<u>Context</u>	<u>Fragments</u>	<u>Weight</u>	<u>Date of Context</u>
W F110 White	4	75gm	Undated

M IV F5

M IV F6

M IV F7

TILES FROM GREYFRIARS (SITE B) by MAUREEN MELLOR [1]

Table 13 Floor and Roof Tiles from Medieval Contexts, Greyfriars (Site B)

The Main Church Building

<u>Location</u>	<u>Trench and Context No.</u>	<u>Roof Tile</u>	<u>Floor Tile</u>	<u>Misc.</u>
Extention to N. Nave	XIII L4		1	
	" F5 L1	11		
	" L7		1	
	" L15		2	
N. Aisle	IV L6		1	
	" L20	1		
	" F42 (PM)	11	11	
	" F46 (PM)	14		
N. Nave	I F13		1	
	IX F1		8	
	" F4		16	
		1	2	
	" F10, white mortar		21	
	" Mortar layer in F14		33	
Fill of Culvert	I F2 L1		1 Brick	
	" F2 L2	2		
	" F2 L4		2	
	" F6	4	3	

1. See also S. Robinson, 'Tiles' in T.G. Hassall, C.E. Halpin and M. Mellor, 'Excavations in St. Ebbe's, Oxford, 1967-1976: Part II', Oxoniensia, xlix (1984), 263-65, M V D1-D9.

TILES

Table 13 (con.)

The Main Church Building

<u>Location</u>	<u>Trench and Context No.</u>	<u>Roof Tile</u>	<u>Floor Tile</u>	<u>Misc.</u>
N. Choir Wall	VII F7 L1	1	1	
W. of Extension of Nave	V F15	20		
	" F22	1		
	VI F14	1		
	" F24	1		
N. of Extension of Nave	VI F10	4		
W. of N. Nave	IV L21	11	6	
	" L22		19	
	" L24		1	
	" F56	1		
	" F59 (PM)		2	
Nave	IV L14 (PM)		1	
	" F62 L4	1		
	X F6 (PM)		2	
N. Transept	I F20		1	
	II L2	1		
	" L3	1		
	" F9			2
	" F12	2		
	" F13	1		
" F22	1			

TILES

Table 13 (con.)

<u>Cloisters</u> <u>Location</u>	<u>Trench and</u> <u>Context No.</u>	<u>Roof Tile</u>	<u>Floor Tile</u>	<u>Misc.</u>
	XIV		2	
	" L4			3
	" L4/1	6		
	" L8	3		
	" L8/1	6		
	" L12	4	1	
	" L13	2		
	XXXI		19	
Fill of Culvert	XXII L90 (PM)	3		
	Phase I			
	XXXIII F27	3		
	" F/2	23		
	" L88	2		
	" L95	1		
	Phase IIa			
	" L12	3		
	" F30	11		
	" L31	12	2	
	" L32	6	1	
	" L35	1	15	
	" F36		7	
	" L50		4	
	" L53	1		
	" L55	3		
	" F70	3		
	" L94	2		

TILES

Table 13 (con.)

Cloisters
Location

Trench and
Context No.

Roof Tile

Floor Tile

Misc.

Phase IIb

XXXIII F5

" F7

" F17

" F20

" L39

" L41

" F47

" F59

1

2

14

2

1

3

2

1

1

4

2

2

Total number of tiles
from medieval contexts

196

216

5

TILES

Table 14 Decorative Floor Tiles from Medieval and Post-Medieval Contexts, Greyfriars (Site B)

Inlaid Tiles

[1] <u>Haberly Type</u>	<u>Medieval</u>	<u>Post-Medieval</u>	<u>Unstratified</u>
I	1	1	1
II	1		3
IX	1		
XII		4	
XIII		2	1
XV		1	1
XV/XXI		1	
XVII	4	9	9
XVII/XVIII	1		
XVIII		7	
XXI			6
XXII		6	1
XXIII	2	3	11
XXIVa		1	3
XXIV		1	
XXIV/XXV	7	26	
XXV	7	13	78
XXVI	1		4
XXVII		4	2
XXVIII	6	15	36

1. Loyd Haberly, Medieval English Pavingtiles, (1937).

TILES

Table 14 (con.)
Inlaid Tiles

	<u>Haberly Type</u>	<u>Medieval</u>	<u>Post-Medieval</u>	<u>Unstratified</u>
Osney 4 = Variant	XXXI	1	9	10
	XXXI?		5	4
	XXVII		3	
	XXXIII			17
	XXXIII/XXXIV		1	
	XXXIV		3	
Variant	XXXV		10	3
	XXXVI		2	
	XXXVI/XXXVII	1		
	XXXVII	4	1	1
	XXXVIIII	3	7	37
	XXXVIII			4
	XXXIX		1	
	XL	1	3	
	XL/XLI	1	3	
	XLI		3	
	XLIV		1	2
	XLIV/XLVI	1		
	XLVI		2	7
	XLIX	11	12	2
	L		12	2
	LI	1	3	4
	LII	3	11	
	LIII	6	7	10
	LIV	1		
	LIX		3	
LXV		2		
LXV/LXVI		2		
LXVI	14	26	19	
LXXII	4	14		

TILES

Table 14 (con.)

Printed Tiles

<u>Haberly</u>	<u>Type</u>	<u>Medieval</u>	<u>Post-Medieval</u>	<u>Unstratified</u>
	Agnus Dei		2	2
	CXVII		2	3
	CXVI/CXVII	2		
	CXXXIII/CXLVIII		1	
	CCIX		1	
	CXCII			1
<u>Hinton [1] Type</u>				
	A		3	8
<u>Blackfriars [2]</u>				
	No. 11		6	
	No. 13	4	1	
<u>Unidentifiable</u>		3	34	

1. D.A. Hinton, 'Bicester Priory', Oxoniensia, xxxiii (1968), 45.
2. G. Lambrick, 'Further Excavations on the Second Site of the Dominican Priory, Oxford', Oxoniensia, xlx (1985), 151-208.

TILES

Table 15 Decorative Floor Tiles from Medieval Contexts listed by Trench and Context Numbers, Greyfriars (Site B)

<u>Trench</u>	<u>Context</u>	<u>Decorative Tile Type</u>	<u>Number</u>
I	F6	Haberly [1] Type XLIV/XLVI	1
"	F13	CXVI/CXVII	1
"	F20	LIX	1
"	"	XLIX	3
II	L3	LXVI	1
"	F5	XLIX	2
"	F8	XXIV/XXV	1
"	F9	XXV	1
"	F11	LXVI	1
"	F14	LXXII	1
"	F22	XXIV/XXV	1
"	F25	XXXVIII	1
IV	L6	XLIX	1
"	L21	XXXVIII	1
"	"	XXVIII	1
"	"	XLIX	1
"	L22	XXV	1
"	"	I	1
"	"	XXIII	1
"	"	XVII	2

1. Loyd Haberly, Medieval English Pavingtiles, (1937).

TILES

Table 15 (con.)

<u>Trench</u>	<u>Context</u>	<u>Decorative Tile Type</u>	<u>Number</u>
IV	L22	Blackfriars [1] No.13	2
"	"	Haberly Type	2
"	"	LXXII	7
"	"	LXVI	1
VII	F7 L1	CXVI/CXVII	1
IX	White mortar layer	XXIII	1
"	" "	XXV	3
"	" "	LV	1
"	" "	XXVIII	5
"	Mortar layer, F14	XLIX	1
"	F14	LIV	1
"	"	IX	1
"	"	XXV	1
"	Mortar layer, F14	XXIV/XXV	1
"	"	LXVI	1
"	"	LXXII	1
"	F10	II	1
"	"	XVII	1
"	F6	LIV ²	1
X	F42	XXIV/XXV	3
"	"	LIV	1
"	"	XXXVIII	1
XIII	L4	LV	1
"	L15	LV	1
"	L15	Blackfriars No.13	1

1. G. Lambrick, 'Further Excavations on the Second Site of the Dominican Priory, Oxford', Oxoniensia, xlx (1985), 131-208.

TILES

Table 15 (con.)

<u>Trench</u>	<u>Context</u>	<u>Decorative Tile Type</u>	<u>Number</u>
XXXI	L149/1	Haberly Type	XLIX
"	L149/4		XLIX
"	L149/5		XXXVI/XXXVII
"	L149/6		XXXVII
"	L149/9		XXXVII
"	L149/14		XXXVII
XXXIII	F7		XLIX
"	"	Blackfriars No.13	
"	F17		XXIV/XXV
"	"		LXVI
"	"		XXVI
"	"		XXV
"	L31		XVII/XVIII
"	L35		LV
"	"		LIII
"	"		XXXI
"	F36		XI/XLI
"	"		XL
"	"		XXXVII
"	L50		LXVI
"	F59		LV

TILES

Table 16 Decorative Tiles Listed as Found in Different Areas of the Main Church Building and Cloisters

The Main Church Building

<u>Location</u>	<u>Trench and Content No.</u>	<u>Decorative Type</u>	<u>Number</u>
Extention to N. Nave	XIII L15	Haberly [1] type LV	1
	"	Blackfriars [2] No.13	1
	" L4	Haberly type LV	1
N. Aisle	X F42	XXIV/XXV	3
	" "	LIV	1
	" "	XXXVIII	1
	" F6	LIV	1
N. Nave	I F13	CXVI/CXVII	1
	IX Mortar within F14	XLIX	1
	" " "	LIV	1
	" " "	IX	1
	" " "	XXV	1
	" " "	XXIV/XXV	1
	" " "	XXII	1
	" " "	LXVI	1

1. Loyd Haberly, Medieval English Pavingtiles, (1937).
2. G. Lambrick, 'Further Excavations on the Second Dominican Priory, Oxford', Oxoniensia, xlx (1985), 131-200.

TILES

Table 16 (con.)
The Main Church Building

<u>Location</u>	<u>Trench and Context No.</u>	<u>Decorative Type</u>	<u>Number</u>
N. Nave (con.)	IX F10	II	1
	" "	XXVII	1
	" F10, mortar	XXIII	1
	" " "	XXV	3
	" " "	LV	2
	" " "	XXVIII	5
Choir	I F6	XLIV/XLVI	1
	VII F7 L1	CXVI/CXVII	1
W. of N. Nave	IV L21	XLIX	1
	" "	XXXVIII	1
	" "	XXVIII	1
	" L22	XLIX	1
	" "	XXV	1
	" "	I	1
	" "	XXIII	1
	" "	XVII	2
	" "	Blackfriars No.13	2
	" "	LXXII	2
" "	LXVI	7	
" F59			
Nave/Aisle	IV L6	XXXVIII	1
N. Transept	I F20	LIX	1
	II L3	XVII	1
	" "	XLIX	3

TILES

Table 16 (con.)

Cloisters

<u>Location</u>	<u>Trench and Context No.</u>	<u>Decorative Type</u>	<u>Number</u>
	XXXI L149	Haberly type XXXVII	3
		XXXVI/XXXVII	1
		XLIX	2
	XXXIII Phase II	XVII/XVIII	1
	" "	XXXI	1
	" "	XXXVII	1
	" "	XL	1
	" "	XL/XLI	1
	" "	LIII	1
	" "	LV	1
	" "	LXVI	1
	" "	Agnus Dei	2
	" Phase IIb	XXV	1
	" "	XXIV/XXV	1
	" "	XXVI	1
	" "	XLIX	1
	" "	LV	1
	" "	LXVI	3
	" "	Blackfriars No.13	1

TILES

Table 17 A Comparison of Decorative Floor Tiles from Greyfriars and Blackfriars

<u>Decorative Tile Type</u>	<u>Blackfriars</u>	<u>Greyfriars</u>
Haberly [1] Type I	X	X
II	X	X
III	X	
IV	X	
V		
VI		
VII	X	
VIII		
IX		X
X		
XI	X	
XI/XII	X	
XII		X
XIII		X
XIV		
XV	X	X
XV/XXI		X
XVI	X	
XVII	X	X

1. Loyd Haberly, Medieval English Pavingtiles, (1937).

TILES

Table 17 (con.)

<u>Decorative Tile Type:</u>	<u>Blackfriars</u>	<u>Greyfriars</u>
Haberly Type XVII/XVIII	X	X
XVIII	X	X
XIX		
XX		
XXI		X
XXII		X
XXIII	X	X
XXIVa		X
XXIV		X
XXIV/XXIVa	X	
XXIV/XXV	X	X
XXV	X	X
XXVI	X	X
XXVII	X	X
XXVIII	X	X
XXIX		
XXX		
XXXI	X	X
XXXII	X	X
XXXII [1]	X	X
XXXIII		X
XXXIII/XXXIV		X

1. Osney No.4 variant = Blackfriars No.11. J. Sharpe *et al*, 'Osney Abbey, Oxford; Archaeological Investigations, 1975-83', *Oxoniensia*, 1 (1985), 95-132; G. Lambrick, 'Further Excavations on the Second Dominican Priory, Oxford', *Oxoniensia*, x1x (1985), 131-208.

TILES

Table 17 (con.)

<u>Decorative</u> <u>Tile Type</u>	<u>Blackfriars</u>	<u>Greyfriars</u>
Haberly Type		X
XXXIV		X
XXXV		X
XXXVI		X
XXXVI/XXXVII		X
XXXVII		X
XXXVIII		X
Variant		X
XXXIX		X
XL	X	X
XL/XLI	X	X
XLI	X	X
XLII	X	
XLIII	X	
XLIV	X	X
XLIV/XLVI	X	X
XLIV/LX	X	
XLV	X	
XLVI	X	X
XLIX	X	X
L	X	X
LI	X	
LII		
LIII		X
LIV	X	X

TILES

Table 17 (con.)

<u>Decorative</u> <u>Tile Type</u>	<u>Blackfriars</u>	<u>Greyfriars</u>
Haberly Type LV	X	X
LVI	X	
LVII		
LVIII		
LIX	X	X
LX	X	
LXI		
LXII		
LXIII	X	
LXIV	X	
LXV	X	X
LXV/LXVI		X
LXVI	X	X
LXVII		
LXVIII		
LXIX		
LXX		
LXXI		
LXXII		X
LXXIII	X	
Agnus Dei		X
LXXV	X	
XCIV	X	
XCVIII	X	
IC	X	
CI/CII/CIII	X	

TILES

Table 17 (con.)

<u>Decorative Tile Type</u>		<u>Blackfriars</u>	<u>Greyfriars</u>
Haberly Type	CIV	X	
	CXI	X	
	CXVI/CXVII		X
	CXVI	X	
	CXVII		X
	CXXV	X	
	CXXVI	X	
	CXXXI	X	
	CXXXIII/CXLVIII		X
	CLXV	X	
	CLIV	X	
	CLXIV	X	
	CLXVIII	X	
	CLXXXVIII	X	
	CXCI	X	
	CXCII		X
	CIC	X	
	CC	X	
	CCII	X	
	CCVI	X	
	CCVIII	X	
	CCIX		X
	CCXIV	X	
	CCXV	X	
	CCXXVII	X	
	CCXLVI	X	

TILES

Table 17 (con.)

<u>Decorative Tile Type</u>	<u>Blackfriars</u>	<u>Greyfriars</u>
Haberly Type CCLI	X	
CCLII	X	
CCLIV	X	
CCLXI	X	
CCXXV	X	
Bicester [1] Type A		X
F	X	
K	X	
Blackfriars [2] Nos. 1-10	X	
No. 11	X	X [3]
No. 12	X	
No. 13	X	X [3]
No. 14		
No. 15	X	
Nos. 16-42	X	

1. D.A. Hinton, 'Bicester Priory', Oxoniensia, xxxiii (1968), 45.
2. G. Lambrick, 'Further Excavations at the Second Dominican Priory, Oxford', Oxoniensia, xlx (1985), 131-208.
3. See Haberly Type XXXII, variant and J. Sharpe et al, 'Osney Abbey, Oxford; Archaeological Investigations, 1975-83', Oxoniensia, l (1985), 95-132, Tile Report No.4.

M IV 613

LIST OF CONTENTS FICHE IV

	Fiche
VESSEL GLASS by JEREMY HASLAM.	A3
STONE OBJECTS (FIGS.148-85) by GEOFF EGAN (NOS.1-61), MARTIN HENIG (NOS.62-63) AND GWYNNE OAKLEY (NOS.64-82); PETROLOGICAL IDENTIFICATION by H.P. POWELL.	B1
PAINTED WINDOW GLASS (FIGS.186-202) by JILL KERR.	D1
DAUB by JULIAN MUNBY.	E8
PAINTED WALL PLASTER by JULIAN MUNBY.	F1
TILES FROM GREYFRIARS by MAUREEN MELLOR.	F8

Photocopies of the microfiche can be obtained from the Oxford
Archaeological Unit, 46 Hythe Bridge Street, Oxford, OX1 2EP.